

# Shofar



Cheshvan-Tevet 5777 • November/December 2016



## Rabbi's Message

**Honoring Those Who Seek it Least and  
Deserve it Most:  
Betty and Arthur Roswell**

*Who are most honorable? Those who honor others.  
(Pirkei Avot)*

There are those who seek honor. From them, says the Talmud, honor runs away. On the other hand, those who do good for the sake of the deed and for the betterment of others are truly worthy of our respect. To honor such people is not an easy thing because they tend to shun such accolades.

This is the wonderful truth about Betty and Arthur Roswell. If it were up to them, every act of goodness and generosity would be anonymous — theirs and everyone else's. For them, it is the deed that counts. They see themselves

Continued on page 3

**In this issue...**you can click on the page you would like to read first.

Acts of Tzedakah .....	29
Calendar .....	30-31
Cantor .....	5
College Connection.....	16
Community.....	17
Cultural Arts.....	18
Education.....	9-10
High Holy Day Appeal .....	5
IHN Thanksgiving Service.....	6
Israel Trip .....	7
Jewish LIFE .....	16
Legacy Circle.....	3
Lifecycle (TBE Family News).....	26
Mensch of the Month.....	14
President's Message.....	8
Rabbi's Message.....	1, 3
Renaissance .....	20
Roswell Tribute Weekend.....	4
Sisterhood.....	20-23
Social Action .....	24-25
Torah Readers.....	6
Worship Schedule .....	2
Yahrzeits .....	27-28
Youth .....	11-13

## Blood Drive

November 6  
See page 17

## IHN Hosting Weeks

November 6-13 and December 25-31  
**Volunteers Needed**  
See page 25

## IHN Thanksgiving Service

November 22, 7:00 p.m.  
See page 6



## Roswell Tribute Weekend with Special Guests

December 10 and 11  
See page 4



## Shabbat Chanukah Service

December 30  
See page 13

## Worship Schedule

### NOVEMBER

#### Friday, November 4

8:00 p.m. Shabbat Evening Service – Shabbat of Appreciation

#### Saturday, November 5

*Parashat Noach*, Genesis 6:9–11:32

10:00 a.m. Shabbat Morning Service and Torah Study with Bat Mitzvah of Benjamin Dickholtz

#### Friday, November 11

7:00 p.m. Family Shabbat Service with participation of Grades 1 and 2

#### Saturday, November 12

*Parashat Lech L'cha*, Genesis 12:1–17:27

10:00 a.m. Shabbat Morning Service and Torah Study with Bat Mitzvah of Hannah Stetson

#### Friday, November 18

8:00 p.m. Shabbat Evening Service with the Choir

8:00 p.m. Blue Jean Shabbat – By Teens, For Teens

#### Saturday, November 19

*Parashat Vayeira*, Genesis 18:1–22:24

10:00 a.m. Shabbat Morning Service and Torah Study with Bat Mitzvah of Arielle Handler

#### Tuesday, November 22

7:00 p.m. Thanksgiving Service Honoring IHN

#### Friday, November 25

8:00 p.m. Shabbat B'Shir with the Tefilah Band

#### Saturday, November 26

*Parashat Chayei Sarah*, Genesis 23:1–25:18

10:00 a.m. Shabbat Minyan Service and Torah Study

### DECEMBER

#### Friday, December 2

8:00 p.m. Shabbat Evening Services

#### Saturday, December 3

*Parashat Tol'dot*, Genesis 25:19–28:9

10:00 a.m. Shabbat Minyan Service

#### Friday, December 9

7:00 p.m. Family Shabbat Service with participation of Grades 3 and 4; Guests from URJ camps and summer programs

#### Saturday, December 10

*Parashat Vayeitzei*, Genesis 28:10–32:3

10:00 a.m. Roswell Tribute Weekend -- Shabbat Morning Service and Torah Study with special guests and celebratory luncheon (See page 4)

#### Friday, December 16

6:30 p.m. Shabbat Dinner with Shabbat Seder Honoring New Members

#### Saturday, December 17

*Parashat Vayishlach*, Genesis 32:4–36:43

10:00 a.m. Shabbat Morning Service and Torah Study with Bat Mitzvah of Eliana Rosen

#### Friday, December 23

8:00 p.m. Shabbat Evening Service

#### Saturday, December 24

*Parashat Vayeishev*, Genesis 37:1–40:23

10:00 p.m. Shabbat Minyan Service and Torah Study

#### Friday, December 30

7:00 p.m. Shabbat Chanukah Service with the Choir and the Tefilah Band (Bring your chanukiah from home!)

#### Saturday, December 29

*Parashat Mikeitz*, Genesis 41:1–44:17

10:00 a.m. Shabbat Minyan Service and Torah Study

### Mark Your Calendars

## December 16, 6:30 p.m. — Shabbat Seder and Dinner

*Hosted by the Membership Committee*

All members are welcome to share the fellowship of the evening with a special honor for members who joined in the past year. Watch the weekly e-mail for more information.

*You make our temple a wonderful community!*

### Temple Calendar Webpage

<http://www.ourbethel.org/luach-beth-el>

### Shofar Submissions and Deadline

The next issue of the Shofar will be January-February 2076. PLEASE NOTE: The deadline for submissions is December 15. Submit articles via email to:

[ShofarEditor@templebethelnj.org](mailto:ShofarEditor@templebethelnj.org).

In the subject line, please use the following naming convention: Shofar Month/Shofar/Committee Name or Professional Staff Name.

### Torah Portions

You can read a Weekly Torah Commentary by visiting the Union of Reform Judaism's web page: [www.reformjudaism.org/learning/torah-study](http://www.reformjudaism.org/learning/torah-study)



## Rabbi's Message, continued from page 1

as blessed because they can give to others, and because they can, they should. The act is its own reward.

In fact, it is we who have been blessed by the presence of Betty and Arthur in our lives. They are inspiring role models of putting our values into action, and their leadership and generosity have influenced the quality of Jewish life in our community in ways far beyond measure.

I would list the things they have done for us, but I know that this would not please them. So I won't! I will say that were it not for Betty and Arthur, Temple Beth-El would be a very different place and its impact would be far less than it is. The same is true of our Reform Movement around the world, and of our local Jewish community.

I am pleased to say that after much cajoling, Betty and Arthur have agreed to allow us to honor them for a lifetime of honoring others, and to do so in a way that reflects the broad scope of their influence on the Jewish world. It will not be a lavish affair. That would not be to their liking. Rather, we will share with them the kind of celebration of Jewish living and learning that they have worked to make possible for so many others.

On Saturday, December 10, at 10:00 a.m., we will hold a Shabbat service during which some of the key leaders of our Reform Movement will teach Torah in honor of Betty and Arthur. They are: Rabbi Rick Jacobs, the President of the Union for Reform Judaism (URJ); Rabbi Dan Freeland, the President of the World Union for Progressive Judaism (WUPJ); Rabbi Michael Marmur, the Provost of the Hebrew Union College-Jewish Institute of Religion (HUC-JIR); and Rabbi Gilad Kariv, the President of the Israel Movement

for Reform and Progressive Judaism (IMPJ). They are all outstanding leaders of great institutions and powerful and inspiring teachers, and the fact that we will be graced by their presence is in itself indicative of the impact that Betty and Arthur have had on our movement. The service will be followed by a luncheon, during which our guests will pay tribute to Betty and Arthur.

On Sunday, December 11, at 4:00 p.m., we will be joined by Anat Hoffman, the dynamic leader of the Israel Religious Action Center and founder of Women of the Wall. At this event we will also be joined by leaders of our local Jewish community — the Jewish Federation of Somerset, Hunterdon and Warren Counties, the Shimon and Sarah Birnbaum Jewish Community Center, Jewish Family Services, and Rutgers Hillel — who will also pay tribute to Betty and Arthur for their leadership and generosity.

All that remains to make this the extraordinary occasion that it promises to be is for you, the members of our community who have been so blessed by the Roswells, to join in the celebration. As you will see from the details provided in this bulletin and on the invitation you have received, there are a number of ways to participate. Join us for the Shabbat morning service, stay for the luncheon, join us on Sunday afternoon, add words of appreciation to our tribute journal, or all of the above.

Help us honor Betty and Arthur for the innumerable ways that they have honored us.

*L'shalom,*

*Rabbi Arnold S. Gluck*

## HOW WILL YOU ASSURE JEWISH TOMORROWS?



It's not about the zeroes—it's about insuring the continuity of Jewish institutions important to you. A legacy gift of any size makes a difference!



## *We honor our Legacy Circle:*

Anonymous (3)  
Rande and Janet Aaronson  
Lou and Myrna Binder  
Gari and Charley Bloom  
Mike Bloomstein  
Liz and Dave Cohen  
Rabbi Arnold and Sarah Gluck  
Bob Krovetz  
Jay Lavroff  
Leigh Miller  
Rick Miller  
Robin and Larry Osman  
Art and Betty Roswell  
Amy Rubin  
Lillian Swickle  
Goldie Taub  
Steve and Elayne Weitz  
Bruce and Marlane Wolf

Please remember Temple Beth-El in your will, estate plans, or beneficiary designations. A legacy gift ensures that the community will continue to serve future generations. Contact Lil Swickle at [LegacyCircle@TempleBethElNJ.org](mailto:LegacyCircle@TempleBethElNJ.org).

# Roswell Tribute Weekend

Honoring Betty & Arthur Roswell  
for outstanding leadership of the  
Jewish people

**DECEMBER 10 and 11, 2016**

.....



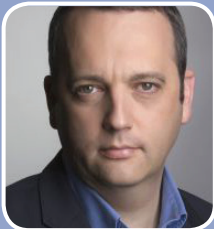
## *Weekend Events & Speakers*

**SATURDAY, DECEMBER 10 at 9:45 a.m.**

Shabbat morning services followed by a luncheon

**Special Guests**

- **Rabbi Rick Jacobs**, President, Union for Reform Judaism
- **Rabbi Daniel Freeland**, President, World Union for Progressive Judaism
- **Rabbi Michael Marmur**, Provost, Hebrew Union College/Jewish Institute of Religion
- **Rabbi Gilad Kariv**, Executive Director of the Israel Movement for Reform and Progressive Judaism



**SUNDAY DECEMBER 11 at 4:00 p.m.**

Wine and Cheese Reception with local organizations followed by lecture by

- **Anat Hoffman**, Executive Director of the Israel Religious Action Center and director and a founding member of Women of the Wall



Sponsorship and tribute options available.  
Register online at [www.tinyurl.com/TBERoswellTribute2016](http://www.tinyurl.com/TBERoswellTribute2016)  
Call the temple office with any questions 908-722-0674.



## A Note From Our Cantor

### Welcoming Cheshvan

by Emily Wigod Pincus

It seemed as if all through the Holy Day Season, I couldn't wait to get to the next holy moment. During the month of Elul, I couldn't wait to get to S'lichot. At Selichot, I couldn't wait to get to Rosh Hashanah. During Rosh Hashanah, I couldn't wait to get to Tashlich. After that, I couldn't wait to get to Kol Nidrei. After Kol Nidrei, I couldn't wait to get to the mincha (afternoon) service on Yom Kippur, because I was very excited about using the new prayer book, and how it would affect my prayers.

At Break Fast, I couldn't wait to get to Sukkot, because I love having a sukkah (lovingly built by my husband, with a little help from the rest of us), having my son help decorate the sukkah, eating in a sukkah, bringing guests to my sukkah...you get the picture.

On Simchat Torah (maybe it was the effect of all the dancing?), I actually paused. I was caught by the great sadness that comes at the end of the last book of the Torah, when the Jewish people weep for the 30 days after the death of Moses: "And there was never again another prophet like Moses – one who knew God face to face".... and the book ends. But immediately after this we chant: "In the beginning, God created the heavens and the earth." We read the first chapter of *B'reishit*, the first book in the Torah. And suddenly, it seemed to me that the most visceral moment of *teshuvah* (repentance, from the word, to return) would be coming the following Shabbat, when we complete the *parasha* of *B'reishit*, and the cycle of weekly Torah readings starts once again.

I am thinking of *teshuvah* in the sense of a resetting, a redirection, a return to one's better self, even a self

that you may not have expressed before, but which is the best expression of you. According to the ancient Rabbis, *teshuvah* is possible until *Hoshana Rabbah*, the seventh day of Sukkot. According to Chasidic text, the Gates of Repentance are always open. But perhaps our best opportunity for a Sabbath of Return is Shabbat *B'reishit*, because this is when the Torah begins again. The year begins again. Everything is possible again. The Torah starts fresh, and so can we.

Even if you missed the entire Holy Day season: all the contrition and all the thankfulness, you can still jump on the *B'reishit* bandwagon and start over. And where do we start? In Cheshvan, plain Cheshvan, the month with no holidays and no fancy clothes. For this reason, the rabbis called it '*Marcheshvan*', or 'bitter Cheshvan', but I don't see it that way. The days become shorter and colder, but this only invites the length and warmth of the spirit to grow in opposition. We can use the time to raise up and sanctify each day and each moment as it comes. With no instance of prioritized holiday (aside from Shabbat), all moments are equal: a plethora of potential starting points for transformation and for rededicating our lives anew.

*L'shalom*

Cantor Emily Pincus



### Support Temple Beth-El Through the High Holy Day Appeal

On the holy days, Jay Lavroff spoke about the importance of sustaining the community through the High Holy Day Appeal. If you missed it, you can view them on our LiveStream channel (address below).

Please give generously to the High Holy Day Appeal. You can make your contribution online at [www.tinyurl.com/TBEHHDAppeal2016](http://www.tinyurl.com/TBEHHDAppeal2016) or via the High Holy Day Appeal page on our website.

Thank you for your generosity.

Jay Lavroff High Holy Day Appeal on LiveStream:  
<http://livestream.com/OurBethEl/5777-Rosh-HaShannah>



## *Thank you to our Torah Readers for September, October and the High Holy Days:*

Samantha Almeida  
Sam Becker  
Lara Becker  
Beth Borrus  
Dave Cohen  
Karen Donohue  
Michelle Engler  
Alexa Fetaya  
Joshua Fox  
Sarah Friedman  
Shayna Friedman  
Hannah Hopson  
Noah Horowitz  
Matthew Keiles  
Jim Lavranchuk  
Jay Lavroff  
Ed Malberg

Matthew McCloskey  
Aaron Oberti-Dirico  
Marissa Osofsky  
Daniel Raines Moshe  
Ethan Rizzi  
Kirsten Rodrigues  
Marcy Rosenfeld  
Talia Rubin  
Stuart Schnall  
Vicki Schwartz  
Daniel Shapiro  
Jake Silver  
Bob Taber  
Lewin Weyl  
Alec Wilson  
Ethan Wolkofsky

*Contact Cantor Pincus if you'd like to chant from the Torah.*

## *IHN Thanksgiving Interfaith Service*

Let's gather together with members of North Branch Reformed Church and St. Bernard of Clairvaux Church to celebrate, sing and pray in thanks for IHN (Interfaith Hospitality Network) and the wonderful work it does in an Interfaith Thanksgiving Service on Tuesday, November 22, at 7:00 p.m. at St. Bernard of Clairvaux Church in Bridgewater.

A choir composed of members from the three congregations will perform songs full of joy and thanks accompanied by members of our own Tefilah Band. Rev. Todd Buurstra, Msgr. Joseph Celano and Rabbi Gluck will each conduct part of the service. Donations will be accepted for the Interfaith Hospitality Network of Somerset County, an organization providing emergency shelter and case management services to families in need. Nonperishable food items will also be collected for the Somerset County Food Bank.

Don't miss this very special evening and opportunity to pray and sing with a few of our partner IHN congregations.





# Temple Beth-El of Hillsborough Adventure in Israel

Led by Rabbi Arnie and Sarah Gluck  
June 25-July 6, 2017

## Program Highlights:

- Explore the Negev Desert and David Ben Gurion's vision of "making the desert Bloom"
- Climb Masada to see the sunrise and hear one of the most dramatic stories in Jewish history
- Step back 3,000 years to the days of King David and the days of the first Temple at the latest archaeological finds at the City of David
- Experience Shabbat in Jerusalem
- Delve into Israel's political situation
- Meet a Kabbalistic artist in the holy city of Tzfat
- Meet soldiers in action and try to understand Israel's security placed on the shoulders of teenagers
- Learn Hebrew culture in the first Hebrew city - Tel Aviv

For more information, contact Rabbi Arnold Gluck at (908) 722-0674 ext. 111 or [arniegluck@gmail.com](mailto:arniegluck@gmail.com)



## From Our President

by Robin Osman

### Seeing the Possibilities

*It was wonderful to see you during the Holy Days. Many people told me the words I shared on Yom Kippur were inspiring. My remarks are excerpted below.*

*I wish you all a wonderful couple of months with much to be grateful for on Thanksgiving, a bright and joyous Chanukah and a happy and healthy New Year!*

I was 14 years old, and it was that long-awaited day. I was finally getting my ears pierced. With great anticipation, I entered the Piercing Pagoda, and they shot those gold balls right through my ears. Then, my mom's frantic voice, "Hank! Catch her!!!"

It was the first of many faints for me. Having a bone set, getting a blood test, even going with my husband for his blood test was enough to take me down.

*On Rosh Hashanah the blast of the shofar awakens us. The Holy Days give us the opportunity for reflection, a time to reimagine ourselves.*

Understandably, I was afraid to donate blood. Surely I would faint. Recently I gave it a try. And, lo and behold, I did not faint. It was mind over matter, and supportive friends cheering me on. I was delighted to learn that my blood type was the same as my outlook on life: B+ (Be positive)!

Today I will speak about seeing the possibilities in our own lives and together as a community. While preparing this speech, I spoke with some people who faced devastating losses, yet managed to find their way forward with grace. A few years ago, Jack and Nora lost their 18-year-old daughter to a heroin overdose. Today, they are funding programs to help teens make better choices.

I asked, "How were you able to create something positive in the face of such tragedy?" Nora told me they decided never to say "if only..." "If only we had seen the signs. If only we knew she was on drugs. If only we had paid more attention." Heartbreaking. They knew that nothing positive would come from that line of thinking.

Bradley Snyder was blinded by an explosion while serving in Afghanistan. Exactly one year from losing his vision, he won a gold medal in the Paralympics for swimming. Bradley believes in the power of asking, "What if..." What if I can succeed? What if I could become a Paralympian? What if I could win a gold medal? What if?

Being a blind swimmer wasn't easy. Bradley crashed into the wall several times. And who doesn't crash into walls in our own lives from time to time? Bradley says, "It's what you do after you crash into the wall that matters." I think that's sage advice.

In a well-known Torah story Moses sent 12 spies to the Promised Land. They came back with a giant cluster of

grapes, so big it took eight men to carry them! Ten scouts came back defeated. "You see the size of these grapes? You should see the size of the people who eat them! They're giants! And we must look like grasshoppers."

Joshua and Caleb reported that they saw a fine land, and that they could conquer the Canaanites. And, indeed, it was a bountiful land. God had put those grapes there as a sign they would flourish in the new land.

The Israelites listened to the ten scouts, and decided to return to Egypt. Because of their lack of faith, God decreed that they would wander the desert for forty years. All the men died, except Joshua and Caleb, who eventually entered the Promised Land.

Twelve scouts observed the same thing. How was it that ten came back defeated, while two returned optimistic? I think the ten scouts were plagued with "if only" thinking. "If only we were bigger. If only we were stronger. If only we had more weapons."

And it seems to me that Joshua and Caleb had a "what if?" mindset. "What if all the food there is so big? What if the people there are weak? What if we're stronger than we think we are?"

On Rosh Hashanah the shofar blast awakens us and gives us the opportunity to reimagine ourselves. "What kind of person do I want to be? How can I reach my potential? What kind of legacy do I hope to leave?" Now is the time for seeing possibilities in our lives, and daring to ask ourselves, "what if...?"

In 1953, a group of dreamers gathered and asked, "what if?" I had the pleasure of speaking with temple founders, Dottie and Irv Vogel and Goldie Taub. They spoke of ten families who met in living rooms with the vision of creating a warm, friendly Reform congregation. Together they painted, laid floor and housed student rabbis. Today, when they see all that Temple Beth-El has become, they say it's everything they had hoped for, yet beyond their imagination at the time. As founders, they feel responsible for ensuring that TBE remains vibrant for future generations.

*What kind of person do I want to be?*

*How can I reach my fullest potential? What kind of legacy do I hope to leave? Now is the time for seeing the possibilities in each of our lives, and daring to ask ourselves: "what if?"*

Over the years, we have proven to be dreamers and positive thinkers who see new possibilities, even in challenging times. When we found ourselves in a precarious





## Youth Education at TBE

### Lisa Friedman to Receive Award from Atlantic District of the Women of Reform Judaism

The Temple Beth-El Sisterhood, a member of the Atlantic District of the Women of Reform Judaism (WRJ), is thrilled to share with the entire Temple Beth-El family that our own **Lisa Friedman** has been selected as this year's recipient of the **Jane Siegel Tikkun Olam Award**. This award is presented at each WRJ district's biennial convention to a woman within the district who "exemplifies the concept of helping to create a better world." Past Atlantic District honorees include Karen Wolk Feinstein, president of the Jewish Healthcare Foundation of Pittsburgh and Rabbi Elyse Frishman, editor of *Mishkan T'filah* among other laudable women.

Earlier this year, our Sisterhood board submitted Lisa Friedman as our nominee for this year's award, based on Lisa's significant work with inclusive education. She is widely recognized in the field of Jewish education as a disability inclusion expert. Since joining the staff of Temple Beth-El in 2001, she has worked to ensure that every student inherits their birthright of learning Torah and connecting with their Jewish heritage.

Before coming to Temple Beth-El Lisa taught special education in a public school setting for six years, where she worked with children with cognitive, emotional and physical disabilities. She has an undergraduate degree in psychology and a master's degree in counseling psychology, both from Rutgers University. Lisa completed the Leadership Institute, a joint program of Hebrew Union College and the Jewish Theological Seminary, in 2013.



Lisa is proud to serve on the URJ Ruderman Inclusion Advisory Council. She is also a member of [Hineinu](#), an innovative collaboration of disability professionals from across Jewish movements who share resources, support and direction to increase inclusion in our synagogues for people of all abilities. Lisa has also worked with Behrman House to produce educational materials that meet diverse student needs, and was awarded the Behrman House Educator Award in 2009. She serves on the faculty of two URJ camps (URJ Camp Harlam and URJ Sci-Tech Academy) and has been involved with the leadership of Sci-Tech since its launch to ensure that it is a fully inclusive camp experience.

Lisa is frequently contacted by leaders of other congregations who wish to become more inclusive, and she has conducted numerous training sessions for faculties, *madrichim* (teen assistants) and lay leaders. She also blogs about disabilities and inclusion at [Removing the Stumbling Block](#) and has been published in a variety of publications, including *Kveller*, The New York Jewish Week's New Normal Blog, Reform Judaism.org and the blog of The Religious Action Center.

Lisa will receive her award on Saturday, November 5 at a ceremony following a celebratory luncheon during the WRJ District Convention in Florham Park. A contingent of family, staff and Sisterhood members from Temple Beth-El look forward to sharing in her special day.

*Mazal Tov Lisa!*

**President**, continued from page 6  
financial position, we didn't close up our tent. We envisioned the L'Dor VaDor campaign, which eradicated debt, stabilized finances, and enabled Temple Beth-El to remain vibrant, making Jewish life accessible to all.

Recently, we participated in the B'nai Mitzvah Revolution, which began with congregants envisioning b'nei mitzvah as a process, rather than a singular moment. Today that dream is reality, as nearly all students continue chanting Torah beyond their b'nei mitzvah.

We strive for excellence in education and high levels of teen engagement. A much higher percentage of our students attend Confirmation Academy than the 50% nationwide average, and we have over forty students in our Post Confirmation class.

Last year we set out to create affinity groups to deepen relationships among congregants. Today 12 groups are forming: from gourmet foodies to cyclists, and over fifty people have expressed interest.

These are a few examples that demonstrate that when we open ourselves up to possibilities, and embark on the journey, we often go farther than imagined.

The New Year is a great time to see new possibilities for Jewish growth. We have an exceptional lineup of guest speakers and adult education opportunities. Rabbi Gluck will teach the Taste of Mussar class, in which Jewish

teachings will help us to identify a personal path of spiritual growth. I hope you will join me for this class.

We can grow Jewishly by participating in worship, social justice activities, Sisterhood and Brotherhood. If each of us could find a way to help this community grow by volunteering, making a donation and/or leaving a legacy gift, we would be a stronger and more vibrant Temple Beth-El.

On Rosh Hashanah Jay Lavroff spoke about our High Holy Day Appeal. Thanks to all who have already contributed, and if you have not yet done so, please consider making a donation. Your commitment is a true mitzvah, a gift that helps ensure our future.

This is the last time I will stand before all of you as president of this wonderful community. Thank you for trusting me to carry Temple Beth-El's torch for a short while. I am grateful for this opportunity. May this be a good and sweet year for all of us, and may we see the possibilities in our own lives, and together as a community. May we dream big, ask "what if," and may we go from strength to strength!

*L'shalom,*

**Robin Osman**

908-295-5713

[robinoz@optonline.net](mailto:robinoz@optonline.net)

*Editor's Note: Temple Beth-El was recently mentioned in this article published on the Ruderman Family Foundation's blog. The Ruderman Family Foundation is one of the Jewish community's leading voices advocating for and advancing the inclusion of people with disabilities throughout our society. Temple Beth-El was named an Exemplar Congregation for Disability Inclusion in 2015 through a partnership of the Ruderman Family Foundation and the Union for Reform Judaism. For more information about the Ruderman Family Foundation, visit [www.rudermanfoundation.org](http://www.rudermanfoundation.org).*

## How to Make your High Holy Days — and Daily Life — More Inclusive

*Originally published October 13, 2016; reprinted with permission.*

We are now in the middle of what is colloquially known as the Jewish High Holy Days: Rosh Hashana and Yom Kippur—the New Year and Day of Atonement, respectively. These two events, outside their religious significance for Members of the Tribe, are incredibly special because of their motif and their ability to bring people together. Families gather for meals and communities for a rare moment fill their synagogues to capacity to discuss what they can do to be better people in the year to come. From the pulpit and in the privacy of dining rooms the theme of inclusion is frequently discussed.

As said, the High Holidays tend to be the one time of year when the entire congregation is present, and that can be a difficult experience for people with disabilities if their community does not subscribe to the need for an inclusive environment. To put it another way, how would you feel if the one time everyone in the group decides to meet up for an event, it is organized or executed in such a way that you specifically will not be able to attend or fully participate? What does that do to your perception of your own value? It's a particularly egregious hurt when everyone can get in and you can't.

"Some people may feel unwelcome because of their disability," says Rabbi Edythe Held Mencher of the Union for Reform Judaism. "Whether it is people making sounds or wheelchairs being relegated to the back, how we treat someone with a disability can make them feel outside of what is normative and what we are traditionally proud of. Some people say why should mental disability, mental health, be so central to high holidays? Because this is the moment we can all hear and all admit to our feelings and understand. But there is a converse, if you aren't able to join at this time, it's incredibly painful."

And it's not just about joining. Being in the room alone does not necessarily make one a participant; surely that decision and the feeling surrounding it is determined by the person in question. Everyone's desired level of fulfilling participation is different, and this can be problematic if we view an activity through a single sensory experience. The blowing of the shofar— a ceremonial ram's horn is a prime example of this. Not everyone can optimally experience it by hearing it, but everyone can benefit from a shofar experience aligned with their needs. "If you're someone who doesn't access [the instrument] that way — deaf or overstimulated for example — it can be an underwhelming or overwhelming experience. People can feel and access a call in different ways. Someone could feel the vibration of the shofar instead of hearing it," explains Rabbi Mencher. Yom Kippur is also particularly relevant for this conversation. From sundown to sundown, Jews mark the Day of Atonement by fasting as a gesture of repentance.

Well, not everyone is capable of fasting. And this is understood for pregnant women and the elderly, but people with disabilities are not always mentioned when such an exemption is described. Just as importantly, when we create such a binary way of observing versus not observing, it can put people in an uncomfortable place and leave them thinking that they are unworthy or less than.



Grace Amodeo, who is blind, preparing for her Bat Mitzvah. (photo credit: Temple Beth El, Hillsborough, NJ)

Because of the significance of this time of the year and the high level and desire for participation, people must also recognize that this is their opportunity to make meaningful and lasting impressions that can directly influence the future of an entire community. Molly Silver, Manager of the Ruderman Synagogue Inclusion Project, offers a great example: "Let's say a young family has received a diagnosis that their child has autism or diabetes— something not visible— and they are suddenly feeling that their life has shifted enormously. They wonder if their child will be safe and loved in this space. Can the child be in the babysitting or preschool program? If they don't receive a message of 'we want you here' they will never come back and no one will have the benefit of knowing them or learning with them. They'll be outside the camp. They need us and we need them. This is the moment that they need to know and feel that they are just as precious as everyone else. These are the moments people remember forever."

Temple Beth-El in Hillsborough, New Jersey has been at the forefront of disability inclusion for many years, offering both religious school options and opportunities for members with disabilities to participate fully in congregational life. Temple Beth-El was recognized as an Exemplar Congregation for their work around disability

Continued on page 12

## Todah Rabah, Confirmation Class of 2016!

Temple Beth-El has a beautiful new Torah stand that debuted this Rosh Hashanah, a generous gift from the 2016 Confirmation Class. The Torah stand was custom designed and constructed to complement the look of our ark and to enhance the beauty of the sanctuary. The finished product was a truly collaborative effort.

The Confirmation Class decisively selected a Torah stand as their gift to our temple from a wish list compiled by the 2016 Confirmation Class Gift Committee: Marci Taylor, Gari Bloom, Roxanne Levinston and Marla Lerner, from suggestions submitted by the Ritual Committee, Beautification Committee, Professional Staff and Youth Culture Committee.

Enter Dave Cohen. Years ago Dave designed our stunning ark. At the time, he also developed preliminary designs for other bimah furnishings. Dave felt strongly that there should be a process to determine the design of the Torah stand and generously offered to spear-head it. A design committee was formed, headed by Dave, and comprised of Ed Malberg from the Ritual Committee, Karen and Mitch Kaplan from the Beautification Committee, Gari Bloom from the Confirmation Class Gift Committee, and Rabbi Gluck and Amy Rubin from the staff.

Drawing on multiple sources and input, the resulting design compliments the horizontal lines of the ark while opening up sight lines for congregants and clergy alike.



Another idea that was incorporated into the final design: a hook on the back of the Torah stand from which the torah mantle can hang, allowing the mantle to be admired when the torah is being read.

Thanks to Amy Rubin for securing a talented local woodworker, Peter Smith of Sandsmith Studios, who donated much of his time on the project.

One of the most interesting and important steps in the Torah stand design process was the coming together of the design committee to view and discuss a mock-up that Peter created. Among other ideas from this collaborative session and the flurry of emails that followed was Mitch's suggestion for cut out Stars of David in the top panel, for a more open and decorative look. Peter was at first concerned that this would be difficult to execute. The beautiful inlaid tars he created exceeded our expectations.

We are grateful to Peter for his generosity and his skill – both of which made it possible for the 2016 Confirmation Class to give the gift of the Torah stand to the community.

The Torah stand design committee and all involved in bringing it to fruition echo words from Ariel Lerner's Class Gift Speech

at Confirmation, "It brings us pleasure that each time someone reads Torah and the Torah is placed on its new Torah stand, he or she will have the opportunity to see something new and beautiful."

## CHANUKAH

### The Expanded Gift Shop Is Coming:

Sunday, December 11 – 8:30 a.m. to Noon  
Monday, December 12 – 4:30 to 7:30 p.m.  
Wednesday, December 14 – 4:30 to 7:30 p.m.  
Sunday, December 18 – 8:30 a.m. to Noon  
Monday, December 19 – 4:30 to 7:30 p.m.  
Wednesday, December 21 – 4:30 to 7:30 p.m.

Come check out our BEAUTIFUL new merchandise from the 2016 New York Gift Show  
AND support the Sisterhood!!

Remember: Sisterhood Members  
Get a 20% Discount



## Annual Shabbat Chanukah Service

December 30, 2016  
7:00 p.m.

Bring your Chanukah menorah and candles from home to light at the beginning of the service.



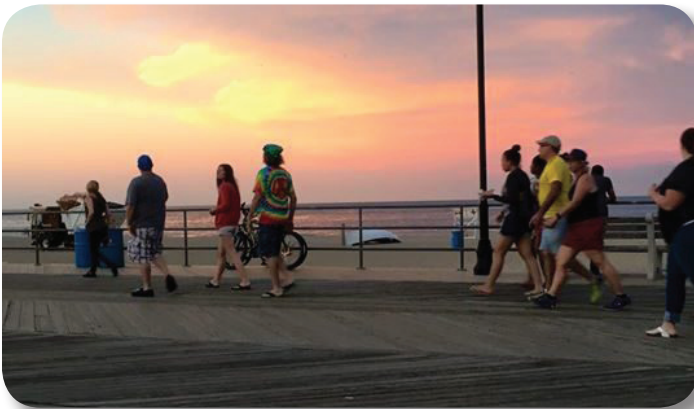
*Editor's Note: Each summer a growing number of our TBE youth participate in Jewish summer programs. Several of our TBE youth blogged about their summer experiences. We're pleased to share the blog post of Noah Horowitz. Noah was the student coordinator at Urban Mitzvah Corps, a program that provides participants with an authentic opportunity to explore their Jewish identities through the lens of social justice and engagement with new communities.*

## Working to Bend the Arc Toward Justice

*By Noah Horowitz, Urban Mitzvah Corps participant, Summer 2016*

*Originally published July 8, 2016 on the Mitzvah Corps blog, ([mitzvahcorps.org/blog/](http://mitzvahcorps.org/blog/)), reprinted with permission*

As a teenager, I sometimes cannot comprehend what is going on in the world today. Very often I hear of acts committed across America, and across the world, steeped in hatred and ignorance. Far too often, I see hot button issues talked about in the same hurtful ways in which they were discussed decades ago. When I hear about hate crimes committed today, police brutality, cases like Alton Sterling and Philando Castile, situations motivated by, or at least as a result of institutionalized racism, homophobia, and hate, I cannot say that I am shocked; I cannot say that I am surprised. But I can say that I am appalled.



I can remember when I first learned about racism. At a very young age, I remember thinking, "Why does the color of skin matter?" and "Why are people so mean?" Today, at 17 years old, I am no closer to an answer.

In my life at home and here at Urban Mitzvah Corps New Jersey (UMC), I am surrounded by, and immersed in, diverse communities. Diversity is a source of strength, a value we must strive for when building loving, inclusive, and accepting communities. Now, more than ever before, I have the opportunity to engage with people from other backgrounds, each of whom has and tells their own unique

narrative. Through participating in UMC last year, and serving as a student coordinator this year, I have learned the power of stories, the power of each person's unique voice.

We are currently reading in the Torah from the book of Numbers, Bamidbar. Thematically, it addresses counting, demographics, statistics. Taking stock of those in our community. Here at UMC, we've been reflecting on the value of being counted, of being seen, of being validated. How do we feel heard? How do we help others in our community feel heard? How do we count those who feel invisible?

Sadly, our world does not always recognize the power of another's experience. In many places around the country, acceptance and chesed, kindness, are not the values that undergird and bolster every community.

For many, the world currently feels chaotic, scary, and dangerous. I, however, hold hope for the future and the great possibility for change. By taking a step back it is important to remember that even in times of great social duress, the arc of history does bend toward justice.

I am appalled by recent, tragic events. I do, however, have hope. I have hope that one day, in the near future, people will realize that black lives matter. One day, everyone will understand that life is a precious thing. A gift to the universe. And with this gift, we will take care of each other, take action to cultivate a healed world of peace, and let all of our neighbors know how much they matter, that they count.

Together as a global community, we can take action to eliminate the terrible and senseless acts of violence we see today. And soon, people all around the world will recognize the power of diversity, the power of learning new perspectives and hearing new stories. I believe that my generation can end racism, and can teach that every soul counts. It is time for a change.

**Inclusive**, continued from page 10

inclusion at the 2015 Union for Reform Judaism Biennial Convention and the synagogue is also featured on an online learning site that is part of the Union for Reform Judaism-Ruderman Family Foundation Initiative on Disabilities Inclusion. Grace Amodeo, pictured here, is one of the congregation's many success stories.

Being inclusive toward people with disabilities does not start or end with people with disabilities. Think of refugees,

of those who are a different race than you, of those with a different sexual orientation, or different language. Inclusion is a conscious decision, a mindset and a value acknowledging that everyone has the same rights as you. It is not unique to any group of people or any particular situation. Once that is understood and introduced into one's social DNA, inclusion ceases to be a task and becomes a way of being. And that is for everyone in this new year.



# SMOOCHY Midnight Run

DONATING WINTER NECESSITIES TO THE HOMELESS OF NEW YORK CITY

## WHAT WE'RE DOING

---

**WHEN:** DECEMBER 17, 2016 AT 2:00 P.M.  
LIBRARY

**WE NEED YOUR HELP:** VOLUNTEER TO ASSIST WITH SORTING, BAGGING, & COOKING. DINNER WILL BE PROVIDED. ALL AGES WELCOME.

DONATIONS WILL BE COLLECTED ANY TIME UNTIL DECEMBER 16TH. BOXES WILL BE LOCATED AT EACH ENTRANCE TO THE TEMPLE.

## CLOTHES

---

SWEATSHIRTS (M-XL)	HATS
SWEATPANTS (M-XL)	GLOVES
PANTS (M-XL)	SCARVES
LONG-SLEEVE SHIRTS (M-XL)	COATS
SOCKS	OTHER WARM
SHOES (M 7+)	WINTER GOODS
BAGS (DUFFLES, BACKPACKS, DRAWSTRING)	

## TOILETRIES

---

SOAP (BAR OR BODY WASH)  
TRAVEL SHAMPOO  
TRAVEL CONDITIONER  
TRAVEL TOOTHPASTE  
TOOTHBRUSHES  
DEODORANT  
RAZORS  
FEMININE PRODUCTS

## FOOD

---

PEANUT BUTTER	TIN FOIL
JELLY	WAX PAPER
BREAD	GALLON ZIPLOCKS
POTATOES	QUART ZIPLOCKS
BAKED POTATO TOPPINGS	
COOKIE DOUGH	
MINI WATER BOTTLES	
ORANGES, CLEMENTINES, ETC.	

**Questions or need more info? Contact Rachel Frish at [tbedye@gmail.com](mailto:tbedye@gmail.com)**

Sign up to bring food items at [tinyurl.com/TBEMidnightRun](http://tinyurl.com/TBEMidnightRun)  
Please remember to bring clothing and other assorted donations to the Sisterhood Rummage Collection on Mitzvah Day November 6.

## MENSCH OF THE MONTH

### November Mensch of the Month: Gregory Hirsch

Our Mensch of the Month for November is Gregory “Greg” Hirsch. If you were introduced to Greg only by reading his long CV, you’d discover that he’s a local OB/GYN. You’d see that he’s served in hospitals and clinics and in private practice and has focused his career on women’s health issues. You might be impressed by his dedication to the local hospital, noting that he’s served on multiple committees. You’d also guess that he must be well-loved and respected by his patients and colleagues because he has been recognized several times, including as a “Doctor Who Makes a Difference” (*NJ Life Magazine*, 2011), a NJ “Top Doc” (*Total Healthcare Resources*, 2014, 2015), an Honoree at the 2013 Women’s Health Benefit (Women’s Health and Counseling Center) and the list goes on.

What you wouldn’t see on the CV is how Greg’s passion for making a difference goes beyond his profession. Since 2010, he’s been the chair of the “Run for Runaways,” a fundraising event for Visions and Pathways. He serves on the board of the Somerset Home for Temporarily Displaced Children. He and his wife Julie are co-captains of the water station at mile 24 of this year’s New York Marathon.

His CV doesn’t really highlight Greg’s “Hineini” attitude, either. When a pick-up truck is needed, Greg is quick to say “Yeah, I’ll do it!” He’s helped with the sukkah, with IHN, with the parking lot, to name a few.

And if the CV were the only way you knew Greg, you wouldn’t know of his *joie de vivre*. He is always ready with a cheerful smile, and sometimes a bit of well-meaning mischief. I’m sure his wife, Julie, and daughters, Iris and Talia, could tell many stories. Here’s one: he took great pleasure in attempting to deep-fry all sorts of foods at the last night of the 4-H Fair. All who volunteered that night got to taste his concoctions. Not all of them were successful, but his sense of fun was infectious – and that’s just what the doctor ordered.



### December Mensch of the Month: Lynn Small

*(Editor’s Note: Usually these articles are written in third person, but Lynn submitted her material in her own voice. It’s so charming; we decided to leave it that way. Enjoy getting to know Lynn!)*



I’ve been a member of Temple Beth-El for just over six years. During that time I have been involved in the temple in various ways. In the past, I was an active member of the Youth Culture Committee. Currently, I am the chairwoman of the Membership Committee.

Growing up, I was also highly engaged in temple life and Judaism, including involvement with my temple’s youth group/JFTY, Mitzvah Corp, Kutz Camp, and Hillel.

Professionally, my background is in finance and accounting. I have my CPA and CMA. About three years ago, I switched career paths and am now involved in patient solutions at Johnson & Johnson. This field includes different support programs to help patient start and stay on their prescribed therapy. With my new career direction, I am able to help people every day, which is much more rewarding than finance.

I’ve been married to my husband, Brian, for 11 years and we have two wonderful, energetic boys, David, six, and Jacob, three, who have been attending temple since birth.

In my spare time, I enjoy traveling. If anyone needs information on Disney, I’m your woman!

### BEGINNING NOVEMBER 29!

#### A Taste of Mussar

An introduction to the study and practice of Jewish spiritual ethics.

with Rabbi Gluck

7:00-8:30 p.m. in the Beit Midrash

Fee: \$36

REGISTER NOW with Susan in the temple office

## What Judaism Means to Me

Excerpted from Gari Bloom's remarks at the Yom Kippur Reflection Service.



Every day, my day starts and ends with the words, "Only to do justice, and to love mercy and to walk humbly with your God." Those are the words on a plaque next to my sink. The plaque was presented to my father Dr. Murray Goldberg, in 1984 by the UJA-Federation, and they are the essence of what Judaism means to me.

I grew up attending a Reform temple in Brooklyn, NY. Tallit were rarely seen, and kippot were optional. The choir was hidden behind a curtain above and behind the raised area where the bimahs stood, as though the music were emanating from the heavens. It struck me as more like church music than temple music.

There was another local Reform synagogue, and also a Conservative one nearby, but I didn't feel completely at home at either the Reform or Conservative temples of my childhood. But what I did love about our temple was that our siddur was mostly in English, and the Hebrew was accompanied by its transliteration, so I was able to participate in the service. (Thanks to Sarah Gluck's adult Hebrew classes, I no longer have to pretend to read Hebrew.) When I attended services I found the prayers and Hebrew poetic and beautiful; they resonated with me.

It was at our temple, and at my home in Flatbush in Brooklyn, where we gathered for so many holidays over the years as a family and extended family for the delicious holiday meals my mother Joyce prepared, where my personal sense of Judaism began to grow. This feeling was shaped by growing up in a neighborhood and attending public schools that all had large populations of Jewish students and teachers. The same dynamic prevailed at my childhood summer camp, Camp Red Wing on Schroon Lake in upstate New York. It was a secular camp, but the directors and most of the campers were Jewish. I grew up with a proud, strong Jewish identity.

As a young adult, I was more preoccupied with my academics and establishing my own life, so I temporarily hit the "hold" button on Judaism. After I married Charley,

almost 30 years ago, we had the opportunity to reconnect with and explore our Judaism together. I was anxious to allow my Jewish identity to unfold and flourish. By contrast, Charley was less so. We needed to find a temple that felt like home to both of us. We temple-hopped in the early years of our marriage, bc (before children), attending services at a dozen or more different temples in central Jersey. It wasn't until Steve Weitz pointed us in the direction of Rabbi Gluck and Temple Beth-El that we found the congregation we were looking for.

I was so impressed with our temple when we discovered it 17 years ago, and I am so proud of it today. It has been here at Temple Beth-El that I have reconnected with my Judaism. It is here that I learned Hebrew and explored the structure and meaning of our service and prayers with Sarah, which has made services more engaging and spiritual for me. I love the fact that here at TBE learning is for everyone, and have enjoyed endless opportunities to learn and grow Jewishly. I have also grown so much through various volunteer opportunities at our temple and in the community. I traveled to Israel with Rabbi Gluck and Sarah and a wonderful contingent of our congregants. What an amazing opportunity that was, to connect with Israel and fellow travelers.

I am thankful for the Jewish foundation TBE has provided my children, Ali, now a college senior, and Mack, a junior in high school. Unlike Charley and me, they didn't have the advantage of growing up in a Jewish town or spending their summers with Jewish peers, so our temple has been an essential part of their early Jewish experience and exposure. I can only

hope that they will take what they've learned and pursue an adult life enriched by their Judaism.

As for me, the lessons learned in the classroom and in the sanctuary at our temple have provided me with an aspect of my Judaism that was absent previously. It has enabled me to function Jewishly in the world I work, live and socialize in. It has offered me opportunities for reflection, like this one, that I find important for both my spiritual and physical well-being. It has given me the context to consider the concept of God and to take notice of God's presence. It has reinforced my desire to give and underlined the importance of being grateful. It has elevated the importance of relationships and the sanctity of all life.

What Judaism means to me is the sum total of all of these things. It's the feeling I get when I experience life through a Jewish lens, when every morning and every night I am reminded: "To do justice and to love mercy and to walk humbly with your God."

“To do justice,  
to love mercy and to walk  
humbly with your God.”



# Jewish LIFE

## Lifelong Learning at Temple Beth-El

### CLASSES

#### Beginning Hebrew Reading

Instructor: Eric Komar

This class will teach the alef-bet and vowels and get you on your way to reading Hebrew quickly and comfortably. Fun learning how to read is 100% guaranteed!

Textbook: *Shalom Hebrew!* (Behrman House)

*Mondays, 10:00-11:00 a.m.*

*November 7, 14, 28; December 5, 12, 19; January 9, 23, 30;*

*February 6, 13, 27; March 6, 13, 20, 27*

*Book Fee: \$20*

#### A Taste of Mussar

#### An introduction to the study and practice of Jewish spiritual ethics

Instructor: Rabbi Gluck

Mussar is a centuries old Jewish body of teachings, a perspective, and a disciplined practice that provides distinctively Jewish answers to the sorts of questions any thinking person asks about life: Why do I keep making the same mistakes over and over? Why do I cause pain to myself and others? What steps can I take to bring my life closer to my spiritual potential? Are there lessons I can learn from the experiences of previous generations? Mussar provides guidance in identifying your uniquely personal path of spiritual growth and offers practices to help bring about that growth. A Taste of Mussar is an introductory four-week course to give you the opportunity to experience the tradition of learning and practicing Mussar that has engaged and helped people for centuries.

*Tuesdays, 7:00-8:30 p.m.*

*Fall: November 29; December 6, 13, 20 or*

*Spring: February 28; March 7, 14, 21*

*Fee: \$36*

#### Beit Midrash with Rabbi Gluck

Join Rabbi Gluck to engage in a deep, dynamic dialogue with some of the great passages and debates of our Rabbis. Texts and topics will be those that Rabbi Gluck has studied in the Beit Midrash of the Hartman Institute in Jerusalem.

*Tuesday, 7:00-8:30 p.m.*

*January 4, 31; February 7, 14*

#### Introduction to Judaism

Instructor: Rabbi Leana Moritt

Learn the fundamentals of Jewish thought and practice. This course is designed for interfaith couples, those from different faith backgrounds considering conversion, or anyone looking for an adult-level introduction, whether Jewish or not. Intro is designed to be a meaningful, educational experience for any person interested in knowing and understanding Judaism and Jewish life. Whatever you are seeking, URJ Introduction to Judaism can guide you toward deeper personal Jewish connection, introduce you to a basic Jewish vocabulary, and help you gain intellectual and experiential knowledge of Judaism as well as the skills necessary to "do Jewish."

*Wednesdays, 7:00-9:00 p.m.*

*January 18, 25; February 1, 8, 15; March 1, 15, 29; April 5, 19, 26; May 3, 10, 17, 24; (snow date June 7)*

*Fee: TBA*

#### Jewish Film Series

#### Saturdays at 7:00 p.m.

*November 12: The Farewell Party*

*December 17: Rock the Casbah*

*January 14: (TBA)*

*March 25: Policeman*

*April 15: TBA*

*May 6: She's Coming Home*

#### Israeli Dancing

#### Thursdays at 7:30 p.m.

*November 3, 10, 17; December 1, 8, 15, 22, 29; January 5, 12, 19, 26; February 2, 9, 16, 23; March 2, 9, 16, 23, 30; April 6, 13, 20, 27; May 4, 11, 18, 25; June 1, 8, 15, 22, 29*

#### Yoga Classes

#### Gentle Yoga Flow

#### Thursdays, 6:30-7:30 p.m.

Instructor: Shari Czar

Whether you've never been in a downward dog or have been practicing half-moon for years, this class is for you. Gentle Yoga Flow consists of stretches to warm-up the body, postures to build strength, balance, and flexibility, deep breathing to promote stress reduction, and deep relaxation to bring calmness and balance. This class is appropriate for any fitness level and great for beginners and abilities of all levels.

*Session 2: November 3, 10, 17; December 8, 22, 29*

*Fee: 6-week sessions for \$72 or drop-in \$15*

## College Connection

by Cindy Scott, Chairperson

This Rosh Hashanah College Connection mailed over sixty Rosh Hashanah packages to our college students. The packages contained apples, honey, a honey dipper, a granola bar, pen and card. Our students love hearing from our temple, especially during the holidays. We have already received lots of nice feedback! In addition, Sarah Gluck sent a very inspiring email message, and a link to Rabbi Gluck's High Holy Day reflections.

If your college student is not yet in our College Connection program, please send an email to Cindy Scott, [c.scott93@yahoo.com](mailto:c.scott93@yahoo.com), with your student's college mailing information. We love connecting our college students with our temple for Rosh Hashanah, Chanukah and Pesach!

L'Shanah Tovah!

Cindy Scott







## Dancing with the JCC Stars with our own Steve Lieberman

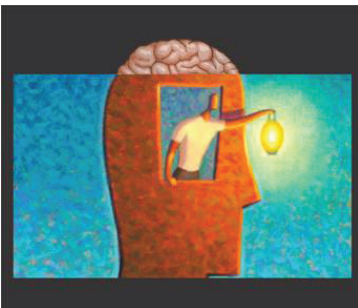
**November 12, 6:00 p.m. at the JCC**

TBE past president, last year's Brotherhood Person of Honor and all-around good guy, **Steve Lieberman**, is putting on his dancing shoes for the 5th season of Dancing with the JCC Stars. This important fundraiser supports JCC's special needs programming, services to seniors, and scholarships for children in the JCC preschool or camp.

Learn more about Steve's participation in the event by visiting his very own Season 5 Dancer's page — there's even a video interview! <http://www.ssbjcc.org/adult/dancing-with-the-jcc-stars-steve-lieberman/>

You can support Steve by placing an ad in the evening's tribute journal or by making a contribution in his name.

Break a leg, Steve, from all your friends at TBE.



## Jewish Spirituality Group

**Affinity Group  
Kicks Off**

Announcing: TBE Connect's Jewish Spirituality Group. The purpose of this group is spiritual liberation. We will gather monthly to open our hearts. Our first meeting will be **November 20 at 11:00 a.m.** We will meditate and study of Jewish teachings with the intention of receiving insight. Our goal is not to add tasks to your "to do" list or to seek a different experience or state of being. Ironically, when you relax expectations with honesty and compassion, you often find amazing authenticity, creativity, and power.

This is not a self-help group, nor an intellectual exercise. We're not trying to act without consequences, or convince ourselves that our problems aren't as bad as they seem. Instead, we will simply breathe in and breathe out, contemplate the wisdom of our faith, and pray for Grace.

Please join us. If you have any questions or feedback, please contact Michael Herzog, (908) 809-3903, [mherzog01@gmail.com](mailto:mherzog01@gmail.com).

## TBE Fall Blood Drive Sunday, November 6 7:30 a.m. to 12:30 p.m.

### Three ways to sign up:

1. Make your appointment at [www.redcrossblood.org](http://www.redcrossblood.org)  
Enter sponsor code: Temple Beth-El - Hillsborough;
2. Sign up using the American Red Cross App (available in the App store); OR
3. Contact Jodi Siegal [jsdegonzalez@gmail.com](mailto:jsdegonzalez@gmail.com) (908) 541-1170

Visit [www.redcrossblood.org](http://www.redcrossblood.org) or call 1 800 RED CROSS for tips and eligibility guidelines.

Other resources: [www.cdc.gov/malaria/map](http://www.cdc.gov/malaria/map) and [www.sicklecell.org](http://www.sicklecell.org)

**Please bring picture identification.  
Remember, eat a healthy meal and drink plenty of  
fluids before donating!**

## Cultural Arts

by Simona Rivkin, Chairperson

### 2016-2017 Jewish LIFE: Israeli Film Series

- November 12:** *The Farewell Party*, Rabbi Gluck as discussion leader
- December 17:** *Rock the Casbah*, open for co-sponsorship...
- January 14:** TBA, co-sponsored by Sisterhood
- March 25:** *Policeman*, co-sponsored by Social Action Committee
- April 15:** TBA
- May 6:** *She's Coming Home*, co-sponsored by Renaissance



### Israeli Folk Dance

Thursdays at 7:30 p.m.

\$10 per session, first session free to newcomers

Come lose yourself in the rhythms of the dance and the tuneful music, and feel great as your endorphins kick in! You'll feel happy, and lost in the pleasure of the moment!

Questions?

Contact Simona Rivkin [bakerec@comcast.net](mailto:bakerec@comcast.net)



**Our Jewish Film Series continues with  
Rabbi Gluck as discussion leader  
Celebrating Our 60th Film!**

## A Farewell Party

**Saturday, Nov 12 at 7:00 p.m.**

*Doors open at 6:30 p.m.*

*The Farewell Party* is a compassionate comedy about friendship and knowing when to say goodbye. A group of friends at a Jerusalem retirement home decide to help their terminally ill friend. When rumors of their assistance begin to spread, more and more people ask for their help, and the friends are faced with an emotional life-and-death dilemma.

Winner Best Film at Israeli Academy Awards, Audience Award at Venice Days, 2014

**RSVP to Simona at 908-369-7884 or email [Bakerec@comcast.net](mailto:Bakerec@comcast.net)**

**Responses greatly appreciated**

**Sponsored by TBE Cultural Arts Committee**

## Israel Matters

by Beth L. Lavranchuk, Chairperson



### Help the Reform Movement Demand Equality at the Western Wall

Last winter, the Israeli government approved an egalitarian space for prayer at the Western Wall. The long-awaited plan is to create a new area by the Western Wall where the Conservative and Reform movements will be permitted to hold egalitarian prayer services.

Under the agreement, this egalitarian prayer section will be located at the southern expanse of the Western Wall at the site where a temporary platform already exists. The agreement requires that the existing gender-segregated prayer areas and the new egalitarian section will be accessed by a common entrance, but both sections will have equal visibility.

Women of the Wall will move its monthly service to the new section as soon as it is functioning. In addition, the current custodian of the Western Wall will no longer control the area known as the "upper plaza" situated outside the official prayer areas. As a result, it is intended to be possible to hold official national ceremonies in this area where men and women can remain together. This is significant for national functions.

The agreement stipulates, that in the existing sections that remain under Orthodox control, prayer regulations will continue to be governed by the Orthodox. The Reform and Conservative movements, as well as Women of the Wall, welcomed the agreement acknowledging that is a ground-breaking decision. The agreement permits growing recognition of the legitimacy of liberal Judaism in Israel. The importance of this moment cannot be underestimated.

The Agreement has not been implemented, and only a few weeks ago, at the request of the Israeli Supreme

Court, the Israel Movement for Progressive Judaism filed a petition with the Court. The Israel Movement is concerned that while the petition to the court is pending, the government could take action to withdraw the resolution authorizing the agreement. The Movement is asking North American Jews to speak up in support.

You can do this by participating in a letter writing campaign. Simply follow the attached link <http://www.urj.org/foralljews> to express your support. In a few days, the Hebrew Union College Jewish Institute of Religion in Jerusalem will ordain a new group of Israeli Reform Rabbis, demonstrating the great strides our movement has made in furthering the accessibility of liberal Judaism in Israel. By showing your support you can play your part in this essential mission.

**Beth Lavranchuk**

Israel Matters Committee, Chair

*P.S. Please watch Temple Beth-El communications for some very special opportunities for all of us to learn more about Israel and how it impacts our daily lives as Jews. They are:*

1. Rabbi Gluck's third class in the Shalom Hartman Engaging Israel Series entitled: Jewish Values and the Israeli-Palestinian Conflict. It is ongoing and all dates are listed in the E-letter or the calendar.
2. Roswell Tribute Weekend, December 10 and 11, honoring Arthur and Betty Roswell
3. Tu B'Shvat Weekend, February 10 to 12, with Scholar-in-Residence Rabbi Marc Rosenstein

Caren Bateman

**SHOEBOX**  
COMPUTER SERVICES, INC.

117 West End Avenue, Suite 201  
Somerville, NJ 08876

(908) 722-9379 • Cell (908) 507-9024



**Paul Arnold Associates, Inc.**

"For Every Insurance Problem,  
There Is A Solution"

**Ready to handle all your Business  
and Personal Insurance needs:**

- Business Insurance • Umbrella
- Workers Compensation • EPLI
- Directors & Officers • Health Insurance
- Homeowners / Umbrella

**Michael F. Braunstein, CPIA, Partner**

Phone (973) 927-0084 x 3073

Fax (973) 927-0155

Michael@paularnoldassoc.com

www.paularnoldassoc.com





## Renaissance Happenings

by Esther Wallach, Renaissance Group

### The Scoop

Twenty members enjoyed the full course of delicious Jewish fare, hot pastrami, corned beef, and sides like Mama used to make, plus salad bar and dessert, too, at the recent outing to Lox, Stock & Deli. Many thanks to Carol Ahlert and Jules Smolinka for arranging this event and transportation.

### Mark Your Calendars

**Sun., Nov. 6 2:00 p.m.** **Raritan River Music:**  
**A Special Autumn Concert in Pittstown, NJ**  
For details, see email from Harriet Thaler.

### Celebration Weekend Honoring Betty and Art Roswell

**Sat., Dec. 10 10:00 a.m.** Shabbat Service and Luncheon

**Sun., Dec. 11 4:00 p.m.** Wine and cheese with speaker  
Anat Hoffman  
(See more on page 4)

**Sun., Dec. 18 12:00 p.m.** **(Pre) Chanukah Party Pot Luck**  
Hosted by the Tabers – watch for holiday flier with details.

**Sun., May 7** Senior Brunch and Play Hairspray at Voorhees HS  
Details to follow soon from Barry and Gayle Skolky.

### Spin on it: Dreidel Mystical Meanings

Courtesy of Mazornet.com

Students of Kabbalah, who thrive on finding and interpreting symbols, read the dreidel as a comment on the struggle between the rational, physical, and spiritual forces within everyone.



Nun (נ) - nefesh, soul  
Gimmel (ג) - guf, body  
Hey (ה) - sechel, mind  
Shin (ש) - hakol, all

Which one will win out?

There are soaring moments when the soul dominates, when corporeal material desires carry more weight, and when cool calculating logic rules, but nothing compares to the harmony of all aspects working together.

**THERE ARE TWO WAYS OF  
SPREADING LIGHT: TO BE  
THE CANDLE OR THE  
MIRROR THAT REFLECTS IT.**

— EDITH WHARTON

The Renaissance Group is a 50+ social group that gets together to share interests, experiences, and activities. New membership is welcomed! Should you wish additional information about the group, or want to contribute to the Renaissance Happenings column, we welcome your submissions on a learned experience or human interest story. Please contact Harriet Thaler at 908-788-0269 or [thalerz@embarqmail.com](mailto:thalerz@embarqmail.com).



### Thanksgiving Food Drive

We're collecting to provide complete Thanksgiving meals to IHN and Homesharing families. **You can help.** Please donate:

Jiffy Corn Muffin Mix  
Canned Corn  
Canned Cranberry Sauce  
Canned Green Beans

Gravy (canned or jar)  
Mashed Potatoes (Boxed)  
Stuffing (Boxed)  
Sweet Potatoes (Small Cans)

Please consider bringing an item every time you come to the temple. Whole turkeys are also needed. Contact Carol Ahlert at [carolahlert@yahoo.com](mailto:carolahlert@yahoo.com) or Barbara Johnston at [bjohnston1836@gmail.com](mailto:bjohnston1836@gmail.com) to coordinate.

Place donations in the **baskets in the Religious School** rotunda until November 20. We also need volunteers to assemble the baskets on November 20, and deliver them on November 21.

Please contact Carol or Barbara to help.

**Sponsored by Sisterhood and Religious School**



## Sisterhood

### Meet Sisterhood's Woman of Valor for 2016:

### *Cindy Scott*



The Sisterhood is excited to announce that our Woman of Valor for 2016 is Cindy Scott, a former two-term Sisterhood president, as well as Temple Beth-El board member and College Connection coordinator. Most of us have seen Cindy doing many different things around temple, without adding up everything she actually does for us. For example,

together with Caren Bateman, Cindy has been making the fourth grade religious school family quilts since their (now 30-year-old) children were in fourth grade themselves. Cindy has also often done some gardening on the temple grounds.

One of her most visible roles recently has been the Purim bag project that Sisterhood initiates every year. Cindy is especially proud that each Temple Beth-El family and staff member receive one of the exquisite Purim bags that she and Laura Miller lovingly design and assemble. She is also proud to have the honor of coordinating the many volunteers who help deliver the hundreds of Purim bags every year. Other programs that have benefited from Cindy's talents and energy are the Sisterhood Thanksgiving food drive, in which volunteers help purchase, assemble and deliver dinners and groceries to families in need; the Giving Network; the Somerset Resource Center; and Women of the Wall.

Talent for project management appears to be a recurring theme for Cindy, both at Temple Beth-El and throughout her 34-year career with Johnson & Johnson, beginning in 1974 after earning her bachelor's degree in biology from Douglas College. Cindy has much she could brag about from her time at J & J, including earning her PhD in pharmacology while working full-time in a variety of positions in biochemical research and managing several laboratories. She could easily take pride in the variety of management positions she held after earning her PhD – positions in research and development, information and document management support services, project management, and corporate reporting. However, the aspect of her professional career in which she takes particular pride is her role in the women's leadership initiative, which she spearheaded for several years.

Cindy and her husband David have been members of the temple for 24 years. She is emphatic that Temple Beth-El

has been and continues to be a spiritual beacon and Jewish "home base" for her family and for her, noting especially her conversion to Judaism in 1999 (with Rabbi Gluck) before her eldest daughter Maddie's bat mitzvah that year. By far, her family is what she points to as her greatest source of pride: her 32-year marriage to her husband, David; her three children Maddie, Leah and Adam; and her new son-in-law, Dan. She says she is so proud of their many accomplishments and, more importantly, of the wonderful, caring, thoughtful people they are.

We are proud to call Cindy a fellow Sisterhood member and our extremely deserving Woman of Valor for 2016. We hope that many of you in our community are able to join us on Thursday, December 15 at 6:30 p.m. for our special Woman of Valor dinner in her honor. Please see the flyer on page 22 for details.

### *Women's Torah Study*

*(one of those perks of Sisterhood membership)*

Next Session:

**Wednesday, November 30 at 7:30 p.m.**

Hosted by: Beth Lavranchuk  
12 Camden Road, Hillsborough

Discussion Leader: Donna Tischfield

**Parashat Toldot  
(Genesis 25:19-28:9)**

Isaac and Rebecca become the parents of twin boys, Jacob and Esau, and family drama ensues.

Come chat about the drama while enjoying each other's company for a fun, engaging evening.

RSVP to Gayle Skolky  
[gskolky@gmail.com](mailto:gskolky@gmail.com)  
or 908-575-0444



You are invited to attend

## 2016 Annual Sisterhood Woman of Valor Award Dinner for *Cindy Scott*

When: Thursday, December 15 at 6:30 p.m.

Where: Temple Beth-El Kitchen Social Hall

Please help us honor this year's very deserving Woman of Valor, Cindy Scott, who has worked tirelessly in so many capacities for the Sisterhood, as well as the greater Temple Beth-El community. Join us for a thoroughly enjoyable evening with friends and memorable dedications to a truly special lady. A catered vegetarian dinner will be served.

In the spirit of supporting the community at large, Sisterhood will also be collecting contributions at the dinner for the Resource Center of Somerset County, a Hillsborough-based organization that provides assistance to victims of domestic abuse. Your contribution to this worthy charity will also be an opportunity to honor Cindy personally.

This event is open to all paid-up members of Sisterhood. If you haven't yet paid, it's not too late: membership registrations will also be accepted at the Woman of Valor Dinner.

RSVP by Sunday, December 11 to:  
Donna Tischfield, Woman of Valor Dinner Chair  
[Njbird@optonline.net](mailto:Njbird@optonline.net)  
(732) 271-4632

# Sisterhood Mitzvah Day Activities

Collection Sanctuary Social Hall **November 6, 8:30 to 11:30 a.m. only!\***

## **Big Brothers-Big Sisters Rummage Collection & Sisterhood Fundraiser**

### **Items Needed: (Place in large garbage bags)**

- Bedding, curtains, drapes, towels
- All men's, women's and children's clothing, shoes/boots, purses, belts
- Please bag coats, hats, gloves separately as they are going to the SMOOCHY Midnight Run clothing collection.
- Stuffed animals, books, CDs & DVDs, board games, luggage

### **NO Computers, tools, printers, furniture**

*Our Sisterhood will receive 20 cents a pound for soft items, and 5 cents a pound for hard items. which will then be distributed to non-profit locations; Savers, Value Village or Unique Thrift stores that will sell the items at a nominal cost with profits going back to BB-BS.*

\*Tax Receipts available Nov 6 on table in Sanctuary Social Hall.  
Contact Cindy Scott [c.scott93@yahoo.com](mailto:c.scott93@yahoo.com) to arrange drop-off other than November 6.



**Giving Network Collection:** *An all-volunteer nonprofit started in 1999 that helps families in need in Somerset county by providing basic household items.*

### **Items Needed:**

- Blankets, towels and sheets in good condition
- Microwaves, toasters, toaster ovens, lamps, dishes
- Pots, pans, bowls, silverware
- Vacuums
- Irons, iron boards,
- Infant car seats, cribs, bassinets, pack-n-plays
- Please **NO** coffee mugs, plastic ware, computers, furniture



Invitations and Personalized Stationery for all life's special occasions

*Susan Brenner*  
908-601-1297

[susan@theinvitationladynj.com](mailto:susan@theinvitationladynj.com)  
[www.theinvitationladynj.com](http://www.theinvitationladynj.com)

- Shop on-line or in-person
- Invitations for all occasions
- Great teacher gifts, note cards, camp notes & more
- Same prices but better service than other on-line shopping

Mention this ad to receive 20% off

**dk**  
**deli king of clark**

30 Clarkton Drive  
Clark, New Jersey 07066  
(732)-574-2040  
fax (732)-574-3447

**Toll Free 1-800-410-DELI**





## Social Action

## Repairing the World...One Mitzvah at a Time!

by David Cohen and Jodi Siegal, Co-Chairs

### Yom Kippur Food Drive

**WE DID IT!**

**T**hank you to the entire TBE community for helping us reach our High Holiday Food Drive goal of 6000 lbs. with an additional \$400 dollars in donations for the Somerset County Food Bank.

David Kornberg did a wonderful job coordinating this successful drive again this year. A huge "thank you" goes out to all of the volunteers, young and old, who stapled flyers on grocery bags, handed them out, carried and collected bags from the parking lot to the truck and helped unload the truck. A very special "thank you" goes to Mitch and Karen Kaplan for the use of the Reps truck. We are appreciative of Weis Market in Hillsborough for helping us reduce hunger in our community by donating the grocery bags again this year. We also want to thank Amy Rubin, Susan Walters and Robin Osman for helping with publicity.

Hunger is an ongoing problem and the need for food is great in our area. Providing supplies for the Somerset County Food Bank is an ongoing activity to which our TBE community is deeply committed. Food can be dropped off all year round in the entrance to the temple.

In appreciation,

*Jodi Siegal and Dave Cohen*  
Co-chairs Social Action Committee

*Our crew of volunteers who unloaded the bounty at the Somerset County Food Bank:*

*Front row, l-r: David Kornberg, Beth Borrus, Jay Taylor  
Back row, l-r: Jonathan Snyder, Sim Cohen, Micah Kroloff,  
Matt Lavranchuk, Mitch Kaplan, Debbie Goldblatt, Karen Kaplan, David Herman, Ken Snyder, Evan Lerner, a TBE friend, Jeff Resnick, Vicki Schwartz and Brian Horowitz.*



Many volunteers, including Talia Hirsch, Nancy Feusse, Marissa Kass, Iris Hirsch and Sam Radowitz shown here, tirelessly loaded the food donations on the Reps truck.



### Jewish Hospice Care



- Excellent Nurse to Patient Ratio
- Home Health Aide Support for Family
- Bereavement Support Monthly Meeting
- Complementary Chicken Soup plus Harp and Massage therapies



**STEIN HOSPICE**  
*at The Oscar and Ella Wilf Campus for Senior Living*

**49 Veronica Ave., Suite 206  
Somerset, NJ 08873  
(732) 227-1212  
[www.SteinHospiceNJ.org](http://www.SteinHospiceNJ.org)**

Serving Union, Middlesex,  
Somerset and Monmouth Counties

*Accredited by the National Institute  
for Jewish Hospice*



# Interfaith Hospitality Network

Leigh Freeman, Coordinator — IHN / Temple Beth-El

**Our next hosting date is November 6-13, 2016**

## 2016-2017 IHN Hosting Schedule

November 6-13      February 12-19      June 4-11  
December 25-January 1      April 23-30

The Interfaith Hospitality Network of Somerset County (IHNSC) is a not-for-profit organization that provides many layers of services for homeless families with children. IHNSC provides a valuable service as most other programs for homeless families do not provide the range of services to families with children.

Temple Beth-El hosts clients of IHN six times a year, approximately February, March or April, June, August, October or November and December. The families call Temple Beth-El "home" for a week and our volunteers give

their time to assure that the families have a warm and welcoming stay with good food, compassion, play, and lots of good conversation

Getting involved requires only a few hours from one to six times a year...you choose your level of involvement. Every volunteer is an important mentor to our IHN families.

Please visit [www.tinyurl.com/TBEIHNSignup](http://www.tinyurl.com/TBEIHNSignup) or call the appropriate coordinator listed below to schedule a volunteer shift. Always check the IHN Coordinators Contact List in each issue of the Shofar, as it's possible that there have been changes. **Each volunteer is expected to honor their commitment to the IHN hosting week. If a volunteer is unable to fulfill their commitment, they should contact another volunteer and swap dates.**

## IHN Coordinators Contact List

Function	Name	Main Phone	Other Phone	Email Address
Coordinator	Leigh Freeman	908-359-2724	908-391-1397 (c)	<a href="mailto:dancer.leighfreeman@att.net">dancer.leighfreeman@att.net</a>
Dinner Shift Volunteers	YOUR NAME HERE			
Evening Shift Volunteers	Julie Hirsch	732-580-8246		<a href="mailto:jbghirsch@gmail.com">jbghirsch@gmail.com</a>
Overnight Shift Volunteers	Sharon Sietz		908-256-6483	<a href="mailto:sharon.sietz@gmail.com">sharon.sietz@gmail.com</a>
Meals	YOUR NAME HERE			
Food/Supplies	Mara White	908-231-1518	301-704-6066 (c)	<a href="mailto:mara@alumni.brown.edu">mara@alumni.brown.edu</a>
Linen Pick-Up	Cindy Andrews		908-635-6858 (c)	<a href="mailto:cjrandrews@gmail.com">cjrandrews@gmail.com</a>
Set-Up/Breakdown	David Cohen	609-683-5766		<a href="mailto:david@decarchitect.com">david@decarchitect.com</a>
IHNSC/Day Center	Karen Donohue	908-704-1920	908-217-0217 (c)	<a href="mailto:karen@ihnsc.org">karen@ihnsc.org</a>

## IHN Training

**An IHN Training Session will be held on Sunday, November 6, 9:00 a.m. to 11:00 a.m. during Mitzvah Day.**

All participants must register for the session at [www.tinyurl.com/TBEIHNSignup](http://www.tinyurl.com/TBEIHNSignup) or by contacting Leigh Freeman ([dancer.leighfreeman@att.net](mailto:dancer.leighfreeman@att.net) or 908-391-1397)

We will cover the mission of IHN of Somerset County, as well as guidelines for the volunteers. Questions are always welcome! If you have thought about volunteering for IHN, but have been skeptical that you would not know what to do, the training will erase all your doubts and answer any questions you may have!

## IHN Coordinators Needed

Two coordinator positions are open: **Meals Coordinator** and the **Dinner Shift Coordinator**. Please contact Leigh Freeman for details [dancer.leighfreeman@att.net](mailto:dancer.leighfreeman@att.net) and/or 908.391.1397.

# Lifecycle

## Mazel Tov to our B'nai Mitzvah Students

Benjamin Dickholtz      Arielle Handler  
Hannah Stetson      Elianna Rosen

## Mazel Tov to...

Jeff and Barrie Resnick on the engagement of their daughter Laura to Sacha Samotin  
Jackie and Max Spinner on the birth of their great-grandson Levi Charles Hall  
Brian Wood and Susan Willet on the wedding of their daughter, Corinne Willet, to Luke Mosher and on their son Peter Wood's engagement to Denise Rose  
Jay and Donna Tischfield, on the engagement of their son David to Jillian Lazor  
Jake and Mary Pleeter on the engagement of their daughter Lauren to Alex Bresner  
Steve and Elayne Weitz on the wedding of their son Daniel to Danielle Harwig

## Our Condolences to...

Cheryl Nelson, on the passing of her mother, Rita Mayer  
Elaine Goldsmith, on the passing of her husband,  
Richard Goldsmith

## Our Caring Community

**Kesher Network:** For those who are unable to attend our worship and simcha events and some adult education classes, our video streaming service is the next best thing to being there. Navigate to [new.livestream.com/OurBethEl](http://new.livestream.com/OurBethEl) from a personal computer or mobile device (apps are available for [apple](#), [android](#) and [roku](#) devices) for a list of upcoming and recent livestream events from Temple Beth-El.

**Shiva Minyan:** For a leader or participants, call Amy Rubin or Cantor Pincus.

**Mitzvah Committee:** To offer or request help, please contact Carol Ahlert, [carolahlert@yahoo.com](mailto:carolahlert@yahoo.com), or 908-359-9357.

**In the event of a loss during the evening or on the weekend, call Rabbi Gluck at 908-722-0674, ext. 111, or 908-229-1618.**

To share your family's news in the Shofar, call Susan Walters in the temple office. Please contact Susan with information about significant occasions, hospitalizations, or the loss of a loved one.

**Prayer for Healing Cards:** Cards are available in the temple lobby to let those in need of healing know that their names were included in our Mishebeirach prayer. The cards can be mailed as postcards by writing the address over the Temple Beth-El watermark or directly inserted into get well cards.

**NJ's LARGEST SELECTION OF FITNESS EQUIPMENT**  
COMPARE MOST MAJOR BRANDS INCLUDING CONSUMERS REPORTS BEST BUYS

**REPS**  
**FITNESS SUPPLY .COM**  
**5,000 SQ FOOT SHOWROOM**  
**RESIDENTIAL • CORPORATE • INSTITUTIONAL**  
**SALES • ON SITE SERVICE • DELIVERY • INSTALLATION**  
**GUARANTEED LOWEST PRICES...EVERYDAY!**

★ **TREADMILLS**      ★ **HOME GYMS**  
★ **ELLIPTICALS**      ★ **FREE WEIGHTS**  
★ **BIKES**      ★ **SUPPLEMENTS**

★ **ACCESSORIES**  
★ **MARTIAL ARTS**  
★ **CLOTHING**

**Special Discounts For Temple Members!**

**NO PRESSURE...NON-COMMISSIONED SALES PROFESSIONALS**

**6 MONTH INTEREST FREE FINANCING**      ★ **908-526-7377**      ★ **OPEN DAYS 7 A WEEK**  
**886 RT. 22 EAST • SOMERVILLE NJ**

## Café Temple Beth-El

Fresh bagels, Coffee, Snacks,  
and Chillin' Together

Open 8:45 to 11:15 a.m. on  
Religious School Sundays



Want to help schmeer  
bagels or make  
coffee? We can  
always use a hand.

Contact Jay Taylor  
908-507-7849 or  
[J.Taylor@Huber.com](mailto:J.Taylor@Huber.com)



# *Yahrzeits* November

[Click here to return to Page 1](#)

We extend our deepest sympathy to those of you who will be marking a loved one's Yahrzeit in the coming month. Below are the dates for the Yahrzeits we will be reciting during Shabbat services.

## **To be read November 11**

Mollie Friedman, mother of Marc Friedman  
Morris Simon, father of Janet Halpern  
Meghan Bradley, daughter of Ileen and Robert Bradley  
Hilda Slackman, mother of Rhonda Brown  
Jerry Hirsch, father of Greg Hirsch  
Ruth Levenberg, mother of Richard Levenberg  
Alexander Markowicz, step-father of Amy McBride  
Aaron Plan, father of Michael Plan  
Benjamin Shapiro, father of Irene Lieberman  
Lila Stein Kroser, mother of Marla Lerner  
Isabelle Mendelson, wife of Stanley Mendelson  
Evelyn Spinrad, mother of Marcy Rosenfeld  
Mona Feirson, cousin of Marilyn Muzikar  
stephen Holler, father of Keith Holler  
Martine Kamenetzky, sister-in-law of Simona Rivkin  
Warren Thaler, husband of Harriet Thaler  
Joseph Lieberman, father of Madelyn Okun  
Paul Young, father of Anita Tolman  
Raymond Boschen, father of Karen Kaplan  
Morton Hersh, father of David Hersh  
Lois Naroden, mother of Alan Naroden

## **To be read November 18**

John McBride, father of Mark McBride  
Louise Fidelman, mother of Wayne Fidelman  
Jacob Blaustein, father of Betty Roswell  
Mildred Ellenberg, mother of Naomi McGlashan  
Marc Jurgrau, brother of Fern Schiffman  
Myer Kaplan, father of Ellen Davidson  
Anna Novak, mother of Dr. Gerald Novak  
Marc Rosberger, father of Molly Rosberger  
Murray Berger, father of Alan Berger  
Joseph Miller, father of Lorin Miller  
Saul Naidorff, father of Judy Schachter  
sondra Silverstein, mother of Fern Smith  
Ben Altschule, father of Sara Friedman  
Al Kamine, husband of Fern Kamine, and father of Hal Kamine  
Joseph Nerenberg, father of Henry Nerenberg  
Martin Rosenel, father of Richard Rosenel

## **To be read November 25**

Elayne Cohen, mother of Randy Cohen  
Max Miller, grandfather of Brett Miller  
William Ballock, brother of Karen Andell  
Stanley Gluck, father of Rabbi Arnold Gluck  
Erwin Naroden, father of Alan Naroden  
Rachelle Friedberg, wife of Morton Friedberg  
Fanny Horowitz, mother of Sidney Horowitz  
Marilyn Kohn, mother of Hal Kohn  
Jeanne Farber, mother of Edith Hurwitz  
Julius Greenhut, grandfather of Robert Adler  
Tseelah Grinberg, mother of Michelle Gerner  
Susan Small, mother of Brian Small  
Harold Freed, father of Diane Morrison  
Annette Rothman, mother of Shelley Gomolka  
Shirley Steinman, mother of Judith Steinman

## **To be read December 2**

Jack Adler, grandfather of Michael Cohen  
Penina Decter, friend of Sheenagh Hirsch  
Pauline Klinghoffer, mother of Doris Moshinsky  
Lester Raynes, brother of Harriet Thaler  
Sidney Shubitz, father of Gerald Shubitz  
Alfred Sweetwood, husband of Gail Meyers  
Sofie Tesman, cousin of Marc Friedman  
Molly Waldorf, mother of William Waldorf  
Shirlee Hersh, mother of David Hersh  
Roslyn Eber, mother of Beth Moran  
Solomon Evens, father of Carl Evens  
Sidney Herman, father of David Herman  
Fae Shubitz, mother of Gerald Shubitz  
Herman Mintz, brother of Goldie Taub  
Jeffrey Peck, father of Jacki Skole  
Melva Shulman, mother of Evette Adler  
Ira Tiplitz, father of Andrea Wolkofsky  
Stacie Michelle Goldstein, sister of Seth Goldstein  
Mildred Hillman, mother of Lillian Swickle  
Gustave Miller, father of Shuey Horowitz  
Joseph Skolky, father of Barry Skolky  
Herman Bloomstein, father of Michael Bloomstein

# *Yahrzeits* December

[Click here to return to Page 1](#)

We extend our deepest sympathy to those of you who will be marking a loved one's Yahrzeit in the coming month. Below are the dates for the Yahrzeits we will be reciting during Shabbat services.

## **To be read December 9**

Nat Schnitzer, grandfather of David Schnitzer  
Laura Shapiro, sister of Irene Lieberman  
Zena Fish, mother of Andrea Bradley  
Philip Schwartzman, father of Tina Kanterman  
Herb Cohen, father of Michael Cohen  
Ida Kaye, grandmother of Susan Plan  
Nathan Lane, father of Steven Lane  
Ruth Uhlfelder, aunt of Robert Adler  
Anna Zelnick, mother of Zelda Reinhart  
Karl Friedman, grandfather of Doris Moshinsky  
Myra Novy, sister of Jackie Spinner

## **To be read December 16**

Herman Adler, grandfather of Robert Adler  
Estelle Bauer, mother of Elaine Goldsmith  
Arthur Brooks, father of Cindy Mangel  
Alan Hatoff, father of Harlee Hatoff  
Faye Miller, grandmother of Brett Miller  
Harry Berkowitz, uncle of Marcy Rosenfeld  
Leonard Eber, father of Beth Moran  
Beverly Sandler, mother of David Sandler  
Marvin Skowronek, brother of Joshua Skowronek  
Murray Stern, father of Lisa Dickholtz  
Joel Keiles, brother of Ann Weinstein  
Joseph Ballock, father of Karen Andell  
Charlotte Cohen, aunt of Shelley Drozd  
Esther Cohen, mother of Rita Fink  
Samuel Friedman, father of Neil Friedman  
Florence Levenson, mother of Edith Rugg  
Dr. Irving Miller, uncle of Gayle Skolky  
Marvin Raynes, brother of Harriet Thaler  
Mary Rucci, mother of Victoria Freiman  
Harry Schrier, father of Sally Rosen  
Irving Levine, father of Alvin Levine  
Glenn Rankin, husband of Stacy Rankin  
Harry Spinner, brother of Max Spinner  
Morton Blaustein, brother of Betty Roswell  
Eva Gitterman, mother of Matthew Gitterman  
Bernice Skowronek, wife of Joshua Skowronek and mother of Brian Skowronek

## **To be read December 23**

Stanley Charles Goldstein, father of Seth Goldstein  
Walter Greenbaum, father of Robert Greenbaum  
Rochelle Glaser Freedman, mother of Cindy Weiss  
Esther Kaminetsky, mother-in-law of Fern Kamine  
Morton Swickle, brother-in-law of Lillian Swickle  
Jules Blake, husband of Barbara Blake  
Julian Arthur Kahn, father of Hillary Angeline  
Estelle Malin, mother of Marilyn Muzikar  
Alvan Milgram, father of Marc Milgram  
Eric Strand, brother of Thomas Strand

Bertha Bloomstein, mother of Michael Bloomstein  
Dover Frankel, father of Jan Miller  
Jill Kaplan-Goret, sister of Mitchell Kaplan  
Roberta Meyers, wife of Edmond Meyers  
Alexander Howard, brother of Sidney Horowitz  
Olivia Roth, mother of Alice Fox

## **To be read December 30**

David Diamondstein, father of Leslie Kass  
Anne Weintraub, grandmother of Sheldon stept  
Shirley Berger, mother of Alan Berger  
Beatrice Cohen, grandmother of Michael Cohen  
Howard Gross, brother of Carol Ahlert  
Helen Ballock, mother of Karen Andell  
Eugene Friedman, brother of Marc Friedman  
David Schoor, father of Marla Schoor  
Nathan Seinfeld, grandfather of David Sandler  
Sadie Bailin, mother of Gary Bailin  
Greta Bollag, grandmother of Laura Miller  
Maurice Greenberg, father of Elaine Krantz  
Barney Walitsky, father of Paul Walitsky  
Sylvia Applebaum, grandmother of Seth Goldstein  
Amy Garthly, mother of Amy Rubin  
Samuel Attner, father of Paul Attner  
Benjamin Drazin, father of Jackie Spinner  
Donald Gorka, step-father of Wendy Horowitz  
Gustave Kaitz, father of Revalee Brody  
Barbara Kass, sister of Henry Nerenberg  
Dora Kirsch, mother-in-law of Stanley Mendelson  
William Margulis, husband of Arleen Margulis  
Edward Reynolds, father of Mark Reynolds  
Marvin Siegel, father of Craig Siegel  
Jack Vogel, father of Dana Colon  
Mildred Trachtenberg, mother of Alta Malberg

## **To be read January 6**

Irving Glatt, father of Evelyn Silverstein  
David Locker, father of Stephen Locker  
Evelyn Weinberger, mother of Daniel Weinberger  
Dave Locker, father of Brenda Osofsky  
Edythe Schrier, sister of Sally Rosen  
William Levine, grandfather of Jeremy Bloch  
Howard Richman, great uncle of Lynn Small  
Evelyn Southland, mother of Stuart Southland  
Jack Spinrad, father of Marcy Rosenfeld  
Harold Gliksmann, brother of Michael Gliksmann  
Esther Rubin Polokoff, grandmother of Kenneth Rubin  
Charles Toborowsky, father of Robert Taber  
Irving Cooperman, father of Frances Taber  
Gladys Goldberg, mother of David Goldberg  
Milton Spivack, father of Geri Lane  
Rose Della Ventura, grandmother of Stephen Swinick  
Betty Weiss, mother of Michael Weiss

## Acts of Tzedakah

### RABBI'S DISCRETIONARY FUND

In memory of Mickey Auerbach  
*Andrea Auerbach*  
In memory of Rose Kass  
In memory of Marvin Finkelstein  
*Beth and Jim Lavrachuk*  
In memory of Elinor "Toots" Glass  
*The Glass Family*  
In honor of Alyssa's graduation from Penn State  
*April Barron*  
In appreciation of her conversion  
*Christine Jochem*  
In appreciation of Rabbi Gluck  
*Wendy and Steve Offen*  
In honor of Matthew McCloskey becoming  
a bar mitzvah  
*Jane and William Waldorf*  
In honor of Ian Oberti-DiRico becoming  
a bar mitzvah  
*Felicia Oberti and Sal DiRico, Aaron and Ian*  
In memory of Charlotte Cohen  
*Shelley Drozd*  
In honor of Rabbi Gluck  
*Lee Rosenfield and Jack Fastag*  
In memory of Richard Goldsmith  
*Elaine Goldsmith*  
In honor of the marriage of Dan and Danielle Weitz  
*Beth and Jim Lavrachuk*

### GENERAL FUND

*Barbara and Russell Johnston*  
In memory of Nathan Handler  
In honor of Talia Rubin reading torah on Yom Kippur  
In honor of Robin Osman's Yom Kippur remarks  
In memory of Janet Schenkman

In memory of Ray Bateman, Sr.  
In honor of Chrys Jochem's conversion to Judaism  
*Amy and Ken Rubin*  
In memory of Cecile Oringer  
*Kenneth Oringer*  
*Robin and Larry Osman*  
In memory of Rita Mayer  
*Steve and Elayne Weitz*  
In memory of Janet Schenkman  
*Elizabeth and Steven Fuerst*  
*Robin and Larry Osman*  
In memory of Robert Wigod  
*Cantor Emily and Drew Pincus*  
*Robert and Larry Osman*  
*Amy and Ken Rubin*  
In memory of Charles and Rebecca Siegel  
*Muriel Siegel*  
In memory of Max and Pearl Schaefer  
In memory of Harry and Rachel Bensoul  
*Rich and Zahava Schaefer*

### CANTOR'S DISCRETIONARY FUND

In memory of Robert Wigod  
*Henry and Elaine Rosenthal*  
*Julie and Greg Hirsch*  
In honor of her conversion to Judaism  
*Christine Jochem*  
In honor of Ian Oberti-DiRico becoming  
a bar mitzvah  
*Felicia Oberti and Sal DiRico, Aaron and Ian*

### RELIGIOUS SCHOOL SCHOLARSHIP FUND

In appreciation of Temple Beth-El  
*Rich and Zahava Schaefer*

### BROTHERHOOD YOUTH SCHOLARSHIP FUND

*Jay and Pam Lavroff*

### YOUTH ACTIVITIES FUND

In honor of Ian Oberti-DiRico becoming  
a bar mitzvah  
*Felicia Oberti and Sal DiRico*

### ADULT EDUCATION FUND

In memory of Ray Bateman, Sr.  
*Julie and Greg Hirsch*

### JULES SWICKLE CHESED FUND

In memory of David Roswell  
*Arthur and Betty Roswell*

### MEMORIAL FUND

In memory of Harry Tucker  
In memory of Rose Brooks Cohen  
*Barbara Cohen*  
In memory of Harold Sage  
*Eileen Ruderman*  
In memory of Sima Kahn  
In memory of Thomas Angeline  
*Hillary Angeline*  
In memory of Samuel Rosenblum  
*Fern Kamine*  
In memory of Sophie Levine  
*Rita Fink*  
In memory of Herbert Sloan  
*Judith Sloan*  
In memory of Ida Cudzynowski  
*Joseph and Barbara Cudzynowski*

Temple Beth-El has many funds available to which members can contribute. Donations to these committed funds help support Temple programs and enable us to continue to maintain a high level of programming for our community.

- |                                     |                             |                                    |                                     |
|-------------------------------------|-----------------------------|------------------------------------|-------------------------------------|
| • Adult Education                   | • Endowment Fund            | • Keshet Network                   | • Religious School Scholarship Fund |
| • Beautification                    | • Garden                    | • Library                          | • Social Action (including IHN)     |
| • B'nei Mitzvah Fund                | • General Fund              | • Mazon Hunger Fund                | • Special Needs                     |
| • Brotherhood Youth Scholarship     | • Holocaust Education       | • Memorial                         | • Yad Chazakah Fund                 |
| • Cantor Pincus' Discretionary Fund | • Israel Matters            | • Prayer Book                      | • Youth Activities                  |
| • Cemetery                          | • Israel Travel Fund        | • Rabbi Gluck's Discretionary Fund |                                     |
| • Cultural Arts                     | • Jules Swickle Chesed Fund | • Religious School Enrichment      |                                     |

Please send donations to committed funds to Susan Walters in the temple office.  
We are not able to accept verbal or email dedications and donations.



## Calendar of Events

### Tuesday, November 1

6:30 p.m. Youth: Leadership Training Seminar  
7:00 p.m. Jewish LIFE: What is Hallel? with Cantor Emily Pincus  
7:30 p.m. Religious School Committee Meeting

### Wednesday, November 2

4:30 p.m. Hebrew School  
6:30 p.m. Confirmation Academy

### Thursday, November 3

6:30 p.m. Jewish LIFE: Gentle Yoga Flow  
7:00 p.m. Israeli Folk Dance Chavurah  
7:30 p.m. Jewish LIFE: Israeli Folk Dancing

### Friday, November 4

8:00 p.m. Shabbat Evening Service with Shabbat of Appreciation

### Saturday, November 5

10:00 a.m. Shabbat Morning Service and Torah Study with Bar Mitzvah of Benjamin Dickholtz

### Sunday, November 6

Mitzvah Day  
IHN Hosting Week Begins  
7:30 a.m. Blood Drive  
8:00 a.m. Sisterhood Rummage Collection  
9:00 a.m. Jewish LIFE: Advanced Beginner Hebrew Reading  
9:00 a.m. Sunday School  
9:00 a.m. Youth Mitzvah Day Project  
9:00 a.m. Other Mitzvah Day Activities  
9:15 a.m. Brotherhood Mitzvah Day at the Food Bank  
10:00 a.m. Jewish LIFE: Aleph Isn't Enough  
11:00 a.m. Q&A Session for Constitutional Revisions

### Monday, November 7

10:00 a.m. Jewish LIFE: Beginning Hebrew Reading  
4:30 p.m. Hebrew School  
7:00 p.m. Mah Jongg  
7:30 p.m. Ritual Committee Meeting

### Wednesday, November 9

4:30 p.m. Hebrew School  
6:30 p.m. No Confirmation Academy  
7:00 p.m. SMOOCHY Lounge Night  
7:30 p.m. Sisterhood Board Meeting

### Thursday, November 10

6:30 p.m. Jewish LIFE: Gentle Yoga Flow  
7:30 p.m. Jewish LIFE: Israeli Folk Dancing

### Friday, November 11

7:00 p.m. Family Shabbat Service with participation of Grades 1 and 2

### Saturday, November 12

10:00 a.m. Shabbat Morning Service and Torah Study with Bat Mitzvah of Hannah Stetson  
7:00 p.m. JCC Event: Dancing with the Stars at the JCC  
7:00 p.m. Jewish LIFE: Film Series *The Farewell Party*

### Sunday, November 13

Social Action Habitat for Humanity Event  
IHN Hosting Week Concludes  
9:00 a.m. No Sunday School — Teacher Convention Weekend

### Monday, November 14

10:00 a.m. Jewish LIFE: Beginning Hebrew Reading  
4:30 p.m. Hebrew School  
6:30 p.m. Post Confirmation  
7:00 p.m. Mah Jongg  
7:45 p.m. Board of Trustees Meeting

### Tuesday, November 15

7:00 p.m. Tribute Planning Meeting  
7:30 p.m. Membership Committee Meeting

### Wednesday, November 16

4:30 p.m. Hebrew School  
6:30 p.m. Confirmation Academy  
7:00 p.m. Q&A Session for Constitutional Revisions

### Thursday, November 17

6:30 p.m. Jewish LIFE: Gentle Yoga Flow  
7:30 p.m. Jewish LIFE: Israeli Folk Dancing

### Friday, November 18

8:00 p.m. Youth: Blue Jean Shabbat  
8:00 p.m. Shabbat Evening Service with the Choir

### Saturday, November 19

10:00 a.m. Shabbat Morning Service and Torah Study with Bat Mitzvah of Arielle Handler

### Sunday, November 20

9:00 a.m. Sunday School with Pre-K/K Family Ed  
9:00 a.m. Jewish LIFE: Advanced Beginner Hebrew Reading  
10:00 a.m. Jewish LIFE: Aleph Isn't Enough  
10:00 a.m. Thanksgiving Basket Assembly  
11:00 a.m. TBE Connects: Jewish Spirituality  
4:00 p.m. Jewish LIFE: iEngage 3: Jewish Values and the Israeli-Palestinian Conflict  
4:00 p.m. Youth: LTS Event Grades 7-8  
7:30 p.m. Brotherhood Get Together

### Monday, November 21

4:30 p.m. No Hebrew School — Thanksgiving Week  
6:30 p.m. Youth Culture Committee  
7:00 p.m. Mah Jongg

### Tuesday, November 22

7:00 p.m. Thanksgiving Service Honoring IHN (Offsite)

### Wednesday, November 23

4:30 p.m. No Hebrew School or Confirmation Academy — Thanksgiving Week

### Thursday, November 24

Thanksgiving Day

### Friday, November 25

8:00 p.m. Shabbat B'Shir with the Tefilah Band

### Saturday, November 26

10:00 a.m. Shabbat Minyan Service and Torah Study

### Sunday, November 27

9:00 a.m. No Sunday School — Thanksgiving Week

### Monday, November 28

10:00 a.m. Jewish LIFE: Beginning Hebrew Reading  
4:30 p.m. Hebrew School  
6:30 p.m. Post Confirmation  
7:00 p.m. Mah Jongg  
7:30 p.m. Executive Committee Meeting

### Tuesday, November 29

7:00 p.m. Jewish LIFE: A Taste of Mussar

### Wednesday, November 30

4:30 p.m. Hebrew School  
6:30 p.m. Confirmation Academy  
7:30 p.m. Women's Torah Study

Visit our online calendar at [www.ourbethel.org/calendar](http://www.ourbethel.org/calendar) for more information, room locations and updated information.

# December

## Calendar of Events

[Click here to return to Page 1](#)

### Thursday, December 1

7:00 p.m. Israeli Folk Dance Chavurah  
7:30 p.m. Jewish LIFE: Israeli Folk Dancing

### Friday, December 2

Confirmation Class Trip to the RAC Departs  
8:00 p.m. Shabbat Evening Service

### Saturday, December 3

10:00 a.m. Shabbat Minyan Service and Torah Study

### Sunday, December 4

RS Grade 5 trip Lower East Side  
Federation Super Sunday  
9:00 a.m. Sunday School  
9:00 a.m. Jewish LIFE: Advanced Beginner Hebrew Reading  
10:00 a.m. Jewish LIFE: Aleph Isn't Enough

### Monday, December 5

Confirmation Class Trip to the RAC Returns  
10:00 a.m. Jewish LIFE: Beginning Hebrew Reading  
4:30 p.m. Hebrew School  
7:00 p.m. Mah Jongg  
7:30 p.m. Ritual Committee Meeting  
7:30 p.m. Religious School Committee Meeting

### Tuesday, December 6

6:30 p.m. Youth: Leadership Training Seminar  
7:00 p.m. Jewish LIFE: A Taste of Mussar  
7:00 p.m. Membership Committee Offsite Dinner

### Wednesday, December 7

4:30 p.m. Hebrew School  
6:30 p.m. Confirmation Academy  
7:30 p.m. Sisterhood Board Meeting

### Thursday, December 8

6:30 p.m. Jewish LIFE: Gentle Yoga Flow  
7:30 p.m. Jewish LIFE: Israeli Folk Dancing

### Friday, December 9

7:00 p.m. Family Shabbat Service with participation of Grades 3 and 4; Guests from URJ camps and summer programs

### Saturday, December 10

Betty and Arthur Roswell Tribute Weekend  
10:00 a.m. Shabbat Minyan Service and Torah Study with Guest Speakers  
Noon Luncheon Celebrating Arthur and Betty Roswell

### Sunday, December 11

Betty and Arthur Roswell Tribute Weekend  
8:30 a.m. Chanukah Gift Shop Open  
9:00 a.m. Sunday School with Grade 1 Family Ed  
9:15 a.m. Brotherhood Board Meeting  
11:00 a.m. Youth: LTS Event Grade 3-6  
4:00 p.m. Roswell Tribute Weekend Event with Anat Hoffman

### Monday, December 12

10:00 a.m. Jewish LIFE: Beginning Hebrew Reading  
4:00 p.m. Chanukah Gift Shop Open  
4:30 p.m. Hebrew School  
6:30 p.m. Post Confirmation  
7:00 p.m. Mah Jongg  
7:45 p.m. Board of Trustees Meeting

### Tuesday, December 13

7:00 p.m. Jewish LIFE: A Taste of Mussar

### Wednesday, December 14

4:00 p.m. Chanukah Gift Shop Open  
4:30 p.m. Hebrew School  
6:30 p.m. Confirmation Academy

### Thursday, December 15

6:30 p.m. Sisterhood Woman of Valor Meeting  
7:30 p.m. Jewish LIFE: Israeli Folk Dancing

### Friday, December 16

6:30 p.m. Shabbat Dinner with Shabbat Seder

### Saturday, December 17

10:00 a.m. Shabbat Morning Service and Torah Study with Bat Mitzvah of Eliana Rosen  
2:00 p.m. SMOOCHY Midnight Run Preparations  
7:00 p.m. Jewish LIFE: Film Series *Rock the Casbah*  
8:00 p.m. SMOOCHY Midnight Run and Shul-in

### Sunday, December 18

8:30 a.m. Chanukah Gift Shop Open  
9:00 a.m. Jewish LIFE: Advanced Beginner Hebrew Reading  
9:00 a.m. Sunday School  
9:15 a.m. Brotherhood Latke Making or Breakfast TBA  
10:00 a.m. Jewish LIFE: Aleph Isn't Enough  
12:00 p.m. Renaissance Chanukah Party  
4:00 p.m. Jewish LIFE: iEngage 3: Jewish Values and the Israeli-Palestinian Conflict

### Monday, December 19

10:00 a.m. Jewish LIFE: Beginning Hebrew Reading  
4:30 p.m. Hebrew School  
6:30 p.m. Youth Culture Committee  
7:00 p.m. Mah Jongg  
7:30 p.m. Executive Committee Meeting

### Tuesday, December 20

7:00 p.m. Jewish LIFE: A Taste of Mussar  
7:00 p.m. SMOOCHY Chanukah Event

### Wednesday, December 21

4:30 p.m. Hebrew School  
6:30 p.m. Confirmation Academy

### Thursday, December 22

6:30 p.m. Jewish LIFE: Gentle Yoga Flow  
7:30 p.m. Jewish LIFE: Israeli Folk Dancing

### Friday, December 23

8:00 p.m. Shabbat Evening Service

### Saturday, December 24

Chanukah: First Candle  
10:00 a.m. Shabbat Minyan Service and Torah Study

### Sunday, December 25

IHN Hosting Week Begins  
Chanukah: 2 Candles  
9:00 a.m. No Sunday School — Winter Break

### Monday, December 26

Temple Offices Closed  
NFTY Winter Kallah Departs  
Chanukah: 3 Candles  
4:30 p.m. No Hebrew School — Winter Break  
7:00 p.m. Mah Jongg

### Tuesday, December 27

Chanukah: 4 Candles

### Wednesday, December 28

Chanukah: 5 Candles  
4:30 p.m. No Hebrew School or Confirmation Academy — Winter Break

### Thursday, December 29

NFTY Winter Kallah Returns  
Chanukah: 6 Candles  
6:30 p.m. Jewish LIFE: Gentle Yoga Flow  
7:30 p.m. Jewish LIFE: Israeli Folk Dancing

### Friday, December 30

Chanukah: 7 Candles  
7:00 p.m. Shabbat Chanukah Service with the Choir and the Tefilah Band

### Saturday, December 31

Chanukah: 8 Candles  
10:00 a.m. Shabbat Minyan Service and Torah Study

# Contacting Temple Beth-El

Temple Office:.....908-722-0674  
 Religious School Office: .....908-704-1212

To Contact the Temple Beth-El Staff by email:

Rabbi Arnold S. Gluck	<a href="mailto:RabbiGluck@TempleBethElNJ.org">RabbiGluck@TempleBethElNJ.org</a>
Cantor Emily Wigod Pincus	<a href="mailto:CantorPincus@TempleBethElNJ.org">CantorPincus@TempleBethElNJ.org</a>
Amy Rubin, Executive Director	<a href="mailto:AmyRubin@TempleBethElNJ.org">AmyRubin@TempleBethElNJ.org</a>
Sarah Gluck, Education Director	<a href="mailto:SarahGluck@TempleBethElNJ.org">SarahGluck@TempleBethElNJ.org</a>
Lisa Friedman, Education Director	<a href="mailto:LisaFriedman@TempleBethElNJ.org">LisaFriedman@TempleBethElNJ.org</a>
Betty Parenti, Financial Manager	<a href="mailto:BettyParenti@TempleBethElNJ.org">BettyParenti@TempleBethElNJ.org</a>
Susan Walters, Executive Secretary	<a href="mailto:SusanWalters@TempleBethElNJ.org">SusanWalters@TempleBethElNJ.org</a>
Ivy Anglin, Religious School Secretary	<a href="mailto:IvyAnglin@TempleBethElNJ.org">IvyAnglin@TempleBethElNJ.org</a>
Rachel Frish, Director of Youth Engagement	<a href="mailto:RachelFrish@TempleBethElNJ.org">RachelFrish@TempleBethElNJ.org</a>

## Shofar Advertising

To place an ad in the Shofar or for more  
 advertising information, please contact  
[ShofarAdvertising@TempleBethElNJ.org](mailto:ShofarAdvertising@TempleBethElNJ.org)