

Shofar



Tishrei-Cheshvan 5776 • October 2015



Rabbi's Message

Awesome Days of Awe!

Dear Friends,

As I write this message, I am still glowing from the joy of celebrating the High Holy Days and Sukkot with our TBE family. Thank you to the many members of our community who contributed so much time, effort, heart and soul to make our observances of the holy days beautiful, meaningful and logistically smooth. There are simply too many people who had a hand in this effort to name them individually, but I want everyone to know that the efforts and contributions of each and every member of our community and our staff are deeply appreciated.

Continued on page 2

In this issue...you can click on the page you would like to read first.

Blood Drive	19
Brotherhood.....	13
Calendar	23
Cantor	2
Chai My Name Is	9
College Connection.....	13
Community.....	12
Contributions	22
Cultural Arts.....	14-15
Education Directors	7-8
Jewish LIFE	10-11
Lifecycle (TBE Family News).....	20
Mensch of the Month.....	8
Mitzvah.....	19
President's Message.....	4
Rabbi Gluck's Silver Jubilee	3
Rabbi's Message.....	1-2
Renaissance	16
Sisterhood.....	16-17
Social Action	18-19
TBE Connects.....	11
Worship Schedule	2
Yahrzeits	21

Coming Soon: Mitzvah Day

November 1

More info on Page 18

Projects include:



IHN Volunteer Training

Rummage Collection for



Big Brothers Big Sisters



**Pedals for Progress
Bike Drive**



Blood Drive

Worship Schedule

Thursday, October 1

Chol HaMoed Sukkot

Friday, October 2

Chol HaMoed Sukkot

6:00 p.m. Shabbat for Tots

8:00 p.m. Shabbat Evening Service

Saturday, October 3

Shabbat Chol HaMoed Sukkot, Exodus 33:12–34:26

10:00 a.m. Shabbat Morning Service and Torah Study with

B'nei Mitzvah of Isabella Almeida and

Jonathan Funaro

Sunday, October 4

Chol HaMoed Sukkot

Erev Simchat Torah/Shemini Atzeret

7:00 p.m. Simchat Torah Service and Torah Parades

Monday, October 5

Shemini Atzeret

9:00 a.m. Shemini Atzeret and Yizkor Service

Friday, October 9

7:00 p.m. Family Shabbat Service with Grade 6 Kabbalat

Torah

Saturday, October 10

Parashat Bereishit, Genesis 1:1–6:8

10:00 a.m. Shabbat Morning Service and Torah Study with

B'nei Mitzvah of Amanda Cohen and Jack Haftel

Friday, October 16

8:00 p.m. Shabbat Evening Service with Choir

Saturday, October 17

Parashat Noach, Genesis 6:9–11:32

10:00 a.m. Shabbat Morning Service and Torah Study with

Bat Mitzvah of Justine Smith

Friday, October 23

8:00 p.m. Shabbat Evening Service — Shabbat B'Shir

Saturday, October 24

Parashat Lech L'cha, Genesis 12:1–17:27

10:00 a.m. Shabbat Minyan Service and Torah Study

Friday, October 30

6:00 p.m. Shabbat Seder

Saturday, October 31

Parashat Vayeira, Genesis 18:1–22:24

10:00 a.m. Shabbat Minyan Service and Torah Study

Temple Calendar Webpage

<http://www.ourbethel.org/luach-beth-el>

Shofar Submissions and Deadline

The next issue of the Shofar will be November 2015. PLEASE NOTE: The deadline for submissions is October 15.

Submit articles via email to:

ShofarEditor@templebethelnj.org.

In the subject line, please use the following naming convention: Shofar Month/Shofar/Committee Name or Professional Staff Name.

Rabbi's Message, continued from page 1

I would be remiss, however, if I failed to single out the extraordinary efforts of Cantor Pincus, Kathy Shanklin, our choir, and our Torah and Haftarah readers. For days after Yom Kippur I couldn't stop hearing the soaring, transcendent music and chanting echoing and reverberating through my whole being. Many of you have told me that you had this same experience of being lifted and moved to the core of your being by these soulful melodies so beautifully and prayerfully rendered by our talented cantor, choir and musicians.

I must also highlight the tremendous effort, meticulous attention to detail, and great concern for the needs of our community on the part of Amy Rubin and our support staff. Thank you for your dedication and professionalism.

For me, one of the highlights of these Days of Awe was the opportunity to have my daughter Shira give the sermon on the second day of Rosh Hashanah. For those who may not be aware, Shira is a second year rabbinical student at the Hebrew Union College–Jewish Institute of Religion in New York. Together with our Director of Youth Engagement, Dan Merer (who led the music) Shira led the High Holy Day services for the Reform community at Brown University in Providence, RI, where she gave a wonderful sermon on the theme of collective responsibility. It was our good fortune that she was able to be with us at TBE on the second day of Rosh Hashanah to share that sermon with us. For those who were not able to be with us that day, the text of Shira's sermon, as well as the texts of the four sermons I gave on Rosh Hashanah and Yom Kippur are available on our TBE website at:

www.ourbethel.org/worship/sermons

These texts are also posted on our temple Facebook page:

<https://www.facebook.com/BethElHillsborough>

On this page you will also find important follow-ups to some of the issues I discussed, including the refugee crisis, and the Pew Study of American Jewry. While you are there, I urge you to "like" this page so you can be part of our ongoing conversation.

You can also find these sermons and other articles on my blog at:

<http://rabbiarniegluck.blogspot.com>

The advantage of accessing these talks through my blog is the opportunity this platform affords us to engage in discussion and dialogue. I would love to hear your thoughts about the topics I addressed, and to encourage you to join in conversation with each other.

For those who would prefer to view the Livestream video recordings, these are also available on our website at:

<https://livestream.com/OurBethEl>

During my Kol Nidrei sermon I made mention of my involvement with a group of Jewish leaders who have been working over the last two years to formulate a response to the troubling findings of the Pew Research Center Study on American Jewry. On October 1 this group released its call to action to renew the vitality of American Jewry. You can access this important document at:

ejewishphilanthropy.com/strategic-directions-for-jewish-life-a-call-to-action/

We just celebrated Simchat Torah with joyful music and dancing, and we once again opened the entire Torah around the circumference of our large social hall. With that peak moment of our Jewish year we have concluded our fall holy day season. How fortunate are we to be able to celebrate life and the beauty of our heritage in the warmth and fellowship of our extended Jewish family that is TBE!

So let us give thanks to God who has given us life, sustained us, and enabled us to reach these days of joy. Amen!

L'shalom,

Rabbi Arnold S. Gluck

A Note From Our Cantor

May We Lie Down in Peace

by Emily Wigod Pincus



Our prayers encompass not only our waking hours, but also our sleeping and resting hours, acknowledging and embracing the healing, restorative power of sleep. That's why, in the prayer known as *Hashkiveinu*, we ask God that "we may lie down in peace, and rise up to life renewed." This prayer forms part of the daily *maariv* (evening) service, and similar language is used at the beginning of the *Kriat Shema Al Hamitah*, the personal prayers said before going to bed, and which contain the Shema. It is a *bakasha*, or petitionary prayer, and here we are asking God for a peaceful sleep, free from worry, and to spread "a sukkah of peace over us, and all your people Israel, and over all Jerusalem."

The traditional prayer also specifically asks God to "shield us, and remove from us every enemy and pestilence, sword and famine and grief; remove the adversary from before us and behind us." The prayer goes into some detail on things that might trouble us or prevent us from having a restful sleep. The bedtime prayer, the *Kriat Shema Al Hamitah*, specifies, "Let not my thoughts upset me, nor evil dreams, nor sinful fancies." At the most basic level, we are asking for the privilege of waking up again the next morning. The literal translation of the first line is "Please, lie us down in peace, O God, and rise us up, O sovereign, to life."

The choices for music for *Hashkiveinu* are a bit complex. Ideally, reciting the prayer should help accomplish what it is requesting. But is it possible to reach a peaceful state while enumerating those things that threaten its existence? Listen to two versions of the prayer we sang over the High Holy Days, but which could be sung at any evening service. They take two different approaches. The first prayer, "*Hashkiveinu*," follows the traditional text and acknowledges the *bakasha* – the request and the fears behind it, but moves forward by the end to achieve

resolution between what is asked and what is answered. It uses a harmonized Sephardic tune that the choir repeats once as a kind of a calming mantra, alternating with recited sections by the cantor.

The second prayer, *Haporeis Sukkat Shalom*, uses only the *chatima*, or seal, of the prayer. The *chatima* to a prayer sums up what the whole prayer has been about, in this case: "Blessed are you, God, who spreads a *sukkat shalom* (shelter of peace) over us, and over all your people, Israel." In this way, it actually transforms the prayer from a *bakasha*, a petitionary prayer, to a gentle *hoda-ah*, a prayer of praise or thanksgiving, to God as a way of thanking God for giving us this shelter. Both are beautiful settings of the text, and different ways to accomplish the same goal. Happy listening, and sweet dreams!

Cantor Emily Pincus

Haskiveinu:

<http://livestream.com/OurBethEl/events/4339098/videos/100712090>

Haporeis Sukkat Shalom:

<http://livestream.com/OurBethEl/events/4367060/videos/100697402>

Support Temple Beth-El Through the High Holy Day Appeal

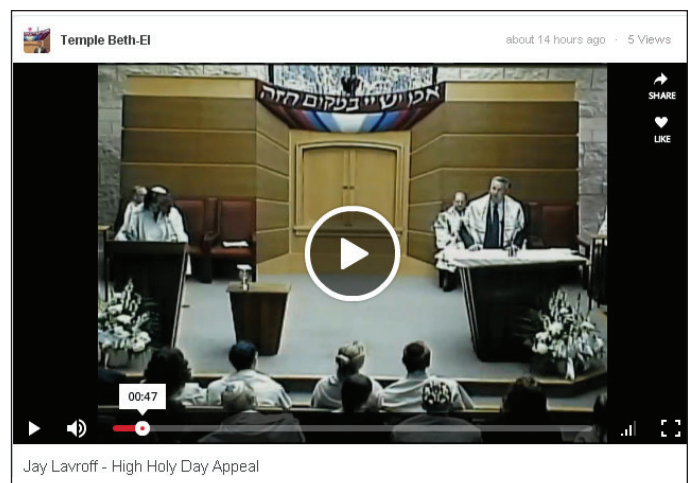
On the holy days, Jay Lavroff spoke about the importance of sustaining the community through the High Holy Day Appeal. If you missed it, you can view them on our LiveStream channel (address below) or by clicking on the image to the right.

Please give generously to the High Holy Day Appeal. You can make your contribution online at www.tinyurl.com/TBEHHDAppeal2015 or via the High Holy Day Appeal page on our website.

Thank you for your generosity.

Jay Lavroff High Holy Day Appeal on LiveStream:

<http://livestream.com/OurBethEl/events/4339105/videos/99930652>



MARK YOUR CALENDARS...



For A Weekend Of Celebrating Rabbi Gluck's 25th Anniversary As Our Spiritual Leader!

Friday, May 13, 2016:

- ❖ Family Shabbat service honoring Rabbi Gluck's 25 years of service.

Saturday, May 14, 2016:

- ❖ Evening program for our youth with the Artist-In-Residence, Alan Goodis.
- ❖ Gala dinner dance and celebration at the Bridgewater Manor.

Sunday, May 15, 2016: Afternoon concert starring Alan Goodis.

WATCH FOR MORE DETAILS IN THE MONTHS AHEAD



HOW WILL YOU ASSURE JEWISH TOMORROWS?

It's not about the zeroes—it's about insuring the continuity of Jewish institutions important to you. A legacy gift of any size makes a difference!



To discuss creating your legacy gift to Temple Beth-El, contact:
Rande Aaronson or Rick Miller
LegacyCircle@TempleBethElNJ.org



LIFE & LEGACY programed the LIFE & LEGACY logo as a trademark of the Harold Grinspoon Foundation. All rights reserved.

From Our President

by Robin Osman

On Yom Kippur, many of you heard me speak about hearing the call from within and the cry from others and responding with "Hineini. Here I am!" I felt this was the most important message I could deliver to the congregation, and some people have shared with me that my words have inspired them. Here they are again for those who didn't hear my remarks and for those who would like to read them.

Hineini, Here I Am!

Yom Kippur President's Address

Delivered by Robin Osman

September 23, 2015

I was always the last one picked in gym class. A lot of adults like to say that, but I *really* was. I was slow. I was uncoordinated. (Still am!) And I had asthma. Who would want me on their team? In fact, I was the only eighth grader to play on the seventh grade field hockey team because I was *that* bad!

Fast forward 30 years, and, surprise, I like biking. My friend began asking me to do a triathlon with her. I said no. Repeatedly. There was just no way someone as unathletic as I was could do a triathlon. I got winded after running half a block, and I didn't swim. After years of saying no, something inside me wondered, what if I could do it? I set my mind to it, took swim lessons and trained hard for a year and a half. Race day was grueling, but when I crossed the finish line and they placed that medal around my neck, that was a great moment of triumph for me!

Why am I sharing this story with you? Today, I'd like to speak about hearing the call from within and from others, and responding with "Hineini, here I am!" The word hineini is uttered fourteen times in the Torah, each time being a pivotal moment for the one who speaks it. The two most well known instances are when God called to Abraham to offer up his son Isaac as a sacrifice, and when God called Moses from the burning bush to lead our people out of slavery to the Promised Land.

They could have just said, "I'm here – present." But Abraham and Moses responded, "Hineini!" Here I am, fully present with an open heart. Ready and willing to do what you ask of me. Hineini says, "I'm all in! You can count on me!"

On Rosh Hashanah the blast of the shofar awakens us and urges us to listen to that small still voice from within—the voice that calls out to us, challenging us to grow and rise to our best selves. Is this the voice of God? Is it our own thoughts? I don't know. That's for each of us to determine. Either way, the Holy Days give us the

opportunity for reflection, and a time to reimagine ourselves.

Maybe you want to climb a mountain, run a marathon or simply run around the block. Or perhaps you'd like to go back to school, learn Hebrew and have a bat mitzvah, or even start your own record label. You may be yearning to be kinder, more compassionate. Only you know what's calling you. Yom Kippur is about remaking ourselves, starting anew and rising to the challenge of fulfilling our potential, about making the impossible possible. One of my favorite quotes is from George Eliot, who said, "It's never too late to be who you might have been."

So, this year, hear your call, embrace it and answer, "Hineini!"

Created in God's image, it's not enough for us to hear our own call. We are also charged with listening to and responding to the cry from others. As Hillel said, "If I am not for myself, who will be for me? If I am only for myself, what am I? And if not now, when?"

I am constantly in awe of how members of our community stand up and support one another and those in need. Here's a scene I recently observed at a house of mourning. An outpouring of love and support surrounded the mourners. The house looked beautiful and the table was replete with lox, bagels, rugalach and even homemade tuna and egg salad. Coffee and decaf, no detail was forgotten. A few members of our community opted not to attend the funeral, but instead to do the great mitzvah of preparing the home and the meal for afterwards. When I thanked one of the women who did this, she said, "Of course I did this for her. She was there for me when my mother passed away."

This is not unusual for those who are well connected within the community. But we need to be in a place where this happens without fail for all. There will be a snowball effect if each of us "hineinis it forward" by reaching out to our fellow congregants when we hear their cry.

Another great example is what Sisterhood did with the Purim boxes. By show of hands, how many of you received a beautiful Purim box last year? Wow, that's great! And that's because Sisterhood's goal was for every member of our community to receive a Purim box. They created a mitzvah donation to send boxes to those who would not have otherwise received one. It was so thoughtful. Our community responded, and all members were included.

When we fill up the truck with food, when Brotherhood offers youth scholarship funds and when the many IHN volunteers enable us to feed and house the homeless, these are just a few examples of how individuals and



***It's never too late
to be who you
might have been.***

Continued on page 5

From Our President, continued from page 4

groups within our community stand up and respond to others and to those in need. When we give a part of ourselves to another, we create holiness and bring God's presence into the world.

There will be many opportunities for us to hear the call from Temple Beth-El this year. When each of us responds, we make our community stronger. On Rosh Hashanah Jay Lavroff spoke about our annual High Holy Day Appeal. It is only through your generosity that Temple Beth-El remains vibrant and is able to make Jewish life accessible to all, regardless of their ability to contribute financially. Your commitment is a true mitzvah.

And this year we are blessed to celebrate Rabbi Gluck's 25th anniversary at Temple Beth-El with a wonderful weekend of celebration in May. Rabbi Gluck says hineini to us all the time, so I hope you will join us in honoring him.

This year we will focus on building connections and deepening relationships our members have with each other, our clergy and staff. We have been quietly working at this for a couple of years now. You may have noticed more outreach to religious school parents and young families and opportunities for them to connect with one another. You might have received calls from a board member just to wish you a happy holiday. And our Resource Guide now includes cell phone numbers and email addresses so we can actually connect with each other in today's world. As we deepen our relationships with each other, our community as a whole grows stronger and more vibrant.

This is going to be a year for trying new things, for testing and learning. We will be piloting programs to help both new and existing members integrate into the community and build stronger bonds. We will be forming

several cohorts or affinity groups spanning a wide range of interests from young adults to empty nesters, from gourmet foodies to cyclists. Look for more information about this in October or November. We are also featuring bios of congregants in the *Shofar* in the new "Chai, My Name" is column so we can all learn more about each other. And we are excited to welcome Dan Merer as our first full-time director of youth engagement as we deepen our focus on inspiring our youth and young adults to love Judaism.

We will look for a return to good old-fashioned home hospitality with havdallah gatherings and possibly other events at people's homes. The first one was a dessert gathering at our home after Shabbat Under the Stars last month. If you would like to host an event at your home, please let us know.

I have found that meaningful relationships grow through face-to-face encounters, and that a strong community is built one relationship at a time. Over the last few years I have had such conversations with many of you. If you and I have not yet had the opportunity, I would love to meet with you and get to know you better. Life is richer when we share our stories, so I'd love to hear yours and I'd be happy to share mine.

May this be a good and sweet year for all of us, and for our community as a whole. May we strengthen ourselves and find strength in one another. And this year, when we hear our own call, and the cry from others, like Abraham and Moses, let each of us answer, "Hineini, here I am!"

If not now, when?

Robin Osman

908-295-5713

robinoz@optonline.net

Save the Date

December 19

Come tickle your taste buds and funny bone

Brotherhood Wine and Chocolate Tasting

and

Outreach Comedy Night



From the Education Directors

Sarah Gluck and Lisa Friedman

To Know Is To Grow

Welcome Back for a New Year of Jewish Learning!

We are thrilled to come back together as a community to experience anew the beauty of Jewish tradition and the joys of Jewish living. Throughout the year, we will gather in the sanctuary, the classroom, the social hall, and outside the walls of our beloved synagogue to nurture and support one another in prayer, study, fellowship, and fun.

On Sunday, October 4, we will welcome eager young faces back to school and feel their energy and excitement all around the building. What a joy it will be to see our students gather for another year of Jewish learning and growth!

We are delighted as well to greet our adult learners who are continuing their studies and to extend a warm and encouraging welcome to those who are new to adult education. Jewish learning is a lifelong pursuit. We are never too young or too old to learn something new. Under the auspices of our local Jewish LIFE (Learning Is for Everyone) adult education consortium, lifelong learning programs are available to everyone in the Somerset-Hunterdon-Warren community. Starting on October 11, with our first Rabbi's Breakfast of the year, Jewish LIFE will once again present a full line-up of classes, lectures, book talks, films, Israeli dancing, yoga, and special events at TBE and elsewhere in the community. Please consider joining one or more classes and feel the joy of making meaningful connections with our tradition, our people, and one another.

It is always a special pleasure at the beginning of the year to welcome our teachers, student madrichim, and support staff. Our school is blessed with an outstanding faculty. Several of our teachers have been with us for years. A few have joined our faculty more recently. Several of our youngest teachers are themselves members of the Temple Beth-El family, whose Jewish commitment and love for the temple have led them back to the religious school while they are in the area developing other professional interests. Please make sure to give Rachel Jussim, Alyssa Mangel (new this year), Rob Mangel, Danielle Mattei, Amy Rubin, and Andrea (Levin) Tone a warm welcome when you see them.



Our school secretary, Ivy Anglin, is our right hand and always ready to answer a question or help you with what you need during daytime hours and during Hebrew school from 4:00 to 7:00 p.m. on Monday and Wednesday.

Student madrichah Samantha Zelnock assists Lisa and holds down the school office on Sunday morning.

No mention of the new school year would be complete without acknowledging our wonderful Religious School Committee. Thank you to committee chair Melissa Pyle, executive liaison Andrea Bradley, and all our committee members. You work with us throughout the year to help make the religious school the best it can be, and we cannot thank you enough.

At Temple Beth-El we all work together to help bring Judaism to life for one another. Listening well to each other and acting with kindness and compassion enrich our encounters and help us develop meaningful relationships.

Parents, we encourage you to stop in before or after class whenever school is in session, to meet your children's teachers and develop a relationship with them. Open communication between home and school is essential to your children's success, and your interest in what's happening in the classroom will help support their Jewish learning at home. You are your children's most important Jewish role models and teachers.

To everyone, whether or not you have children in the religious school, we encourage you to set aside time for your own study, talk with your family and friends about what you are learning, and make Judaism a significant part of your life. We look forward to taking another joyous and rewarding journey through the Jewish year with you.

Wishing you and those you love a happy and healthy New Year! We can't wait to see you!

Temple Beth-El earns up to 5% of your Amazon purchases when you link to Amazon from our website. Click on the Amazon logo below, or visit our website for more information.



Torah Portions

You can read a Weekly Torah Commentary by visiting the Union of Reform Judaism's web page:

www.reformjudaism.org/learning/torah-study



Opening Day is Sunday, October 4 • 9:00-11:00 a.m.
We can't wait to see you!

9:00-9:45

Parents PK-12 & Students PK-6, teachers, and madrichim gather in the sanctuary.

9:45-10:30

Students go to class with teachers and madrichim. Parents PK-12 remain in the sanctuary for a special learning session.

10:30-11:00

PK-6 parents visit classrooms to meet teachers and learn about the year.

Students and madrichim join the clergy and educators in the sukkah.

**Note: Alternative Hebrew classes begin on October 4, 11:00 a.m.-12:30 p.m.*

Monday & Wednesday, October 5 & 7
4:30-6:30 p.m. • Grades 3-7

4:30

Students in grades 3-5 go directly to class; grades 6 & 7 report to Room 202.

6:00-6:30

T'fillah in the sanctuary — Parents, please join us!

Wednesday, October 7 • 6:30-8:30 p.m.
Confirmation Academy: Grades 8, 9 and 10

6:30-7:00

Dinner in the large social hall

7:00-8:30

Confirmation students (grade 10) have class with Rabbi Gluck and Dan Merer. 8th- and 9th-grade students are with the CA faculty.

8:30

Closing ritual (temple lobby)

**Note: 8th-Grade Parent Orientation is October 14
Confirmation Parent Meeting is October 21*

Monday, October 12 • 6:30-8:00 p.m.
Post-Confirmation: Grades 11 & 12

Dinner and discussion with Rabbi Gluck and Lisa in the youth lounge

MENSCH OF THE MONTH

This month we could call this column: Kudos to Kiddos! Our youth volunteers at the 4-H Fair are our Menschen of the Month!

Ranging in age from six to young adults, our community's young people were wonderful workers. They did everything from squeezing lemons, to schlepping supplies, to hawking the products. And they did it all with smiles on their faces. They were terrific ambassadors for our community. We're so proud of them! If you see them, please compliment them on their hard work.

Bella Almeida
Sammy Almeida
Carlie Bendavid
Ali Brenner
Emily Dickholtz
Sarah Friedman
Zachary Friedman
Chelsea Harris
Leah Harris
Ben Hatoff

Josh Hatoff
Arielle Heimberg
Brandon Heimberg
Ally Hill
Iris Hirsch
Talia Hirsch
Norah Holler
Emma Kelner
Alexa Miller
Nathaniel Pincus

Samantha Reilly
Jenna Shallop
Madeline Shallop
Courtney Shapiro
Ariela Southland
Dvorah Southland
Zach Stept
Amanda Taylor
Chloe Wardlow
Sam Zelnock



I grew up in the Bronx until I was twelve, when my family and I moved to Montclair, NJ. It was shortly after we moved that I began volunteering at the local animal shelter and my love for animal rescue began. It was on Thanksgiving day that we adopted my first dog, Tiffany, and I have had dog companions ever since. I currently volunteer with Best Friends Animal

Society to help in promoting animal adoption. Today my husband and I live with Tyler, who came to us through St. Hubert's Animal Welfare Center.

When I graduated from Rutgers College, I began working in IT. I did everything from gathering client requirements, coding, testing, to leading and coaching. To balance the stress of the job, I began taking yoga, and in 2000 took a leave of absence to get certified as a yoga instructor. When I returned to work I began teaching in the evenings to share my love of yoga with others. Over the years, I

continued to add to my toolbox other tools that help to reduce stress and make life more balanced.

In 2013 I took a leap of faith and left the IT world to pursue full-time my passion of coaching others in living healthier, happier and less stressful lives. I started my own company, Infinite Heart Space. Today, combining my life in IT with my wellness life, I coach IT executives and their teams on how to communicate more effectively, manage their time and priorities, and build stress reduction techniques into their daily lives. I teach classes and workshops on yoga, meditation, and other wellness topics. And I do speaking engagements with groups, including companies and moms' groups, who are interested in learning how to use small tools of stress reduction to make huge improvements in their lives.

Since starting my own company, I am constantly experiencing and learning new things. I released a CD on guided meditations, wrote an eBook, released videos, am developing online courses, and much more. Each day is a learning experience and teaches me to stretch past my comfort zone.

I hope that all I do in life will lead me to be remembered as, "Shari was compassionate, kind and continued to challenge herself in ways that helped her grow and serve others."

Successful Food Drive

Thanks to the entire congregation for a very successful High Holy Day Food Drive. Our 495 plus bags, 4,620 pounds of food and other items, and \$884 were greatly appreciated at the Somerset County Food Bank. A special thank-you to our coordinator, Dave Kornberg, Karen and Mitch Kaplan for providing and driving the delivery truck, and to all the volunteers who helped get the bags ready, schlep, load, count, and deliver our donations. Thank you Nancy Feusse, Laure and Larry Paul, Liz and Dave Cohen, Ethan Wolkofsky, Jake Silver, Talia, Iris and Greg Hirsch, Dave Herman, Glenn Cantor, Ian Kornberg, Sam Becker, Brian Horowitz, Michelle and Brian Brown, Jay Taylor, Jay Resnick, Beth Borrus, Vicki Schwartz, Ken Snyder, Jonathan Snyder, Rita Musanti, Kathy Shanklin, Amy Rubin, the Rizzi family and everyone else who jumped in to help when they saw a need.



Two Friedmans (Shayna, left, and Mitchell, center right) and two Talias (Hirsch, center left, and Rubin, right), help load the food truck during the High Holy Day Food Drive. The annual drive is the single largest donation to the Somerset County Food Bank and provides much-needed food supplies. This year Temple Beth-El donated 4,620 pounds of food and \$884. And a hearty thank you to the Social Action Committee for coordinating the effort.



Jewish LIFE

Lifelong Learning at Temple Beth-El

2015-2016 / 5776

CLASSES

BEGINNING HEBREW READING

Sundays, 9:00-9:50 a.m. (12 sessions)

Sarah Gluck

This class will teach the alef-bet and vowels and get you on your way to reading Hebrew quickly and comfortably. Fun learning how to read is 100% guaranteed!

Textbook: *Shalom Hebrew!* (Behrman House)

October 25; November 1, 15; December 6; January 10, 24; February 7, 21, 28; March 13; April 3, 10

ALEF ISN'T ENOUGH

Sundays, 10:00-11:00 a.m. (12 sessions)

Sarah Gluck

Have you ever sat in services and said to yourself, I wish I could understand what I'm saying? (Who hasn't?) If you know how to decode the alef-bet (read phonetically), this class will boost your reading skills as you learn the structure and meaning of select passages from the Shabbat and holiday liturgy and ritual. Key vocabulary, word roots, and rudimentary grammar will guide you toward understanding. Expect many "aha!" moments.

Textbook: *Alef Isn't Enough* (Behrman House/URJ Press)

October 25; November 1, 15; December 6; January 10, 24; February 7, 21, 28; March 13; April 3, 10

INTERMEDIATE BIBLICAL HEBREW

Sundays, 11:15 a.m.-12:30 p.m. (16 sessions)

Sarah Gluck

Continuing in *The First Hebrew Reader*, we will read and translate biblical passages as we build grammar, vocabulary, and an understanding of classical syntax and style. By the time we complete the book, you will be able to read and understand excerpts from the Tanach (Hebrew Bible) in the original language. This year, we will add a Modern Hebrew component. Get ready for even more fun! Textbook: *The First Hebrew Reader* (EKS Publishing) and supplemental materials provided by the instructor

October 11, 25; November 1, 15, 22; December 6, 20; January 10, 24, 31; February 7, 21, 28; March 13; April 10, May 1

RABBI'S BREAKFASTS

Eilu d'varim she-ein lahem shi'ur —

Values Beyond Measure

Sundays, 9:00-10:45 a.m. (4 sessions)

Rabbi Arnie Gluck

This year's breakfast series will continue the lively conversations we had last year about the passage in the Talmud that appears in the morning service, highlighting the deeds and values so essential to Jewish life that their performance has no limit. In other words, we can never do too much to honor our parents, perform acts of kindness, study Torah, welcome guests, visit the sick, rejoice at

weddings, console the bereaved, reflect on our prayers, and pursue peace. This year, Rabbi Gluck will guide us through texts on Study, Making Peace, Rejoicing with Bride and Groom, and Praying with Sincerity, bringing a fresh understanding of what it means to fulfill these *mitzvot* (commandments) in our own lives. BYOB (bring your own breakfast) and come share your thoughts!

October 11; November 22; December 20; January 31

JEWISH RENEWAL IN ISRAELI POP MUSIC

Tuesdays, 7:30-9:00 p.m. • Cantor Emily Pincus

There is a stream of religiosity in contemporary Israeli pop music. In a way, it has always been part of the fabric of songs of the Land of Israel—songs from the Ashkenazi tradition celebrating love of the Land and containing an implicit connection to a sense of the divine. More recently, several famous musicians have become religiously observant, and Mizrahi and Sephardic sounds have entered the mainstream, as has the music of more traditional Ashkenazi groups. In this class, we will examine several well-known examples from the current Israeli musical scene.

October 20 & 27

NEW! iEngage 2

ENGAGING ISRAEL: THE TRIBES OF ISRAEL: A SHARED HOMELAND FOR A DIVIDED PEOPLE

A video lecture and discussion series from the Shalom Hartman Institute, Jerusalem

Sundays, 4:00-6:00 p.m. (8 sessions)

Rabbi Arnie Gluck

Book and materials fee: \$50

The Tribes of Israel: A Shared Homeland for a Divided People, the second iEngage Video Lecture Series, confronts the challenge of creating a Jewish and democratic public space in the modern State of Israel—a shared common space for a people divided along "tribal" affiliations: religious, ideological, national, and geographic. What is the significance of the State of Israel as a Jewish public sphere? How does a people divided along religious, geographic, and ideological lines build a shared society? The Tribes of Israel begins a conversation to restructure the relationship between the collective and the individual tribes that comprise Israel.

November 15, December 13; January 24; February 7; March 13; April 10; May 22; June 5

*Note: You do not need to have taken iEngage 1 to join iEngage 2.

THE LAST SPEECH OF MOSES: THE BOOK OF DEUTERONOMY

Tuesdays, 7:30-9:00 p.m. (4 sessions)

Rabbi Arnie Gluck

The fifth book of the Torah, Deuteronomy, is distinctly and uniquely different from the other four books. Like the others, it is accepted to be part of the revelation that Moses received at Mount Sinai. Unlike the others, it is presented as the final speech of a human being, Moses. That is only the beginning of the strange and fascinating content of this extraordinary book. Based on the profound scholarship of Dr. Micha Goodman, a brilliant Israeli teacher of Torah, this class will explore the message of the book of Deuteronomy and its tremendous relevance for us in our own day.

November 10, 17; December 1, 15

BEIT MIDRASH WITH RABBI GLUCK

Tuesdays, 7:30-9:00 p.m. (6 sessions)

The classic setting for Jewish learning is the Beit Midrash. In English it means "house of learning," but it is much more than that. "Midrash" means to interpret, to seek, to draw forth meaning from our sacred texts. It is the inner sanctuary where the Jewish tradition has lived for the last 2,000 years, and it is recreated wherever Jews join in serious study of Torah. So join us in our own Beit Midrash as we engage in a deep and dynamic dialogue with some of the great passages and issues and debates of our Rabbis. Many of the texts and topics will be those that Rabbi Gluck has studied in the Beit Midrash of the Hartman Institute in Jerusalem.

January 5, 26; February 2, 9; March 1, 8

GREAT JEWISH WRITERS AND GREAT JEWISH WRITING

Tuesdays, 7:30-9:00 p.m. (3 sessions)

Ed Malberg and Bob Krovetz

We will discuss great Jewish writing from medieval times to the present. The first session will talk about Nachmanides' defense of Judaism against attacks from Christianity (the Disputation), poetry by Judah HaLevi and Moses Ibn Ezra, and the writing of Rabbi Nachman of Bratslav. The second class will discuss contemporary writers such as Bernard Malamud, Saul Bellow, and Philip Roth. The third session continues the discussion of contemporary writers, and will also talk about Jewish writing in science fiction (do you have to be human to convert?). We will use short stories and excerpts from larger works. The aim is to look at the writing from a historical perspective and talk about how the background of the writers and the times influenced the writing.

March 29, April 5, April 12

Continued on page 11



Jewish LIFE

Lifelong Learning at Temple Beth-El
2015-2016 / 5776

LIFE, Continued from page 10

JEWISH FILM SERIES

December 12; March 5; April 9; May 21; June 18
All films begin at 7:00 p.m.

ISRAELI DANCING

Thursdays, 7:30 p.m.

October 1, 8, 15, 22, 29; November 5, 12, 19; December 3, 10, 17;
January 7, 14, 21, 28; February 4, 11, 18, 25; March 3, 10, 17, 24,
31; April 7, 14; May 12, 19, 26; June 2, 9, 16, 23, 30

YOGA

Gentle Yoga Flow

Thursdays, 6:30-7:30 p.m. • Shari Czar

Temple Beth-El, Hillsborough

Whether you've never been in a downward dog or you've been practicing your half-moon for years, this class is for you. Gentle Yoga Flow classes consist of stretches to warm-up the body, postures to build strength, balance, and flexibility, deep breathing to promote stress reduction, and, finally, deep relaxation to bring calmness and balance. This class is appropriate for any fitness level and is great for

beginners and abilities of all levels.

Fee: 6-week sessions \$72/Drop-in: \$15

Session 2: October 15, 29; November 5, 12, 19, & 24 (Tues.)

Session 3: December 10, 17, 22 (Tues.), 29 (Tues.); January 7, 14

Session 4: January 21, 28; February 4, 11, 18, 25

Session 5: March 3, 10, 24, 31, (no class 3/17); April 7, 14

Session 6: April 19 (Tues.), 26 (Tues.); May 3 (Tues.), 12, 19, 26

Deep Relaxation (Yoga Nidra)

Thursdays, 7:45-8:15 p.m. • Shari Czar

Temple Beth-El, Hillsborough

We all have stress in our lives and could use an opportunity to relax. Yoga Nidra, or "Yogic Sleep," is an experience of deep relaxation while remaining alert. It is an effortless practice that will guide you into complete physical, mental, and emotional relaxation. You will leave the experience feeling refreshed, relaxed and rejuvenated. All you need to do is lie back and enjoy the experience.

Yoga Nidra has been found to have many benefits, including stress reduction, decreased anxiety, calming of the nervous system, and improved sleep.

Fee: \$15/\$5 for those attending Gentle Yoga Flow the same evening

October 15; November 12; December 17; January 14; February 11; March 10; April 14; May 12

For more information and to register for Gentle Yoga Flow and Yoga Nidra, contact Shari Czar at Shari@InfiniteHeartSpace.com or 908-963-6365.

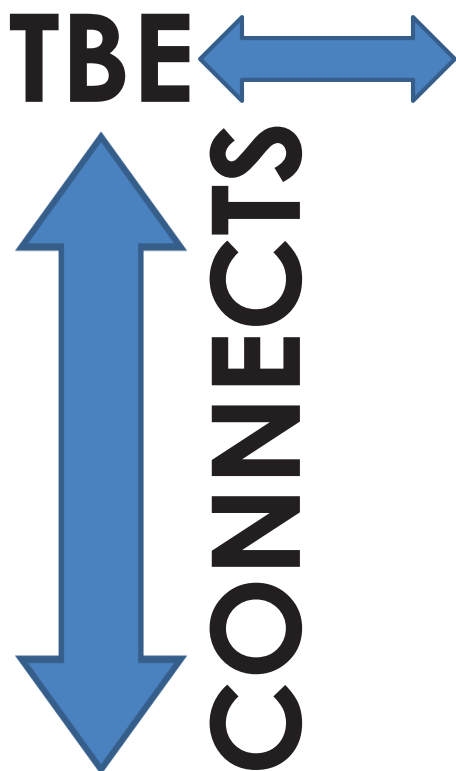
In Celebration of Tu BiShvat...

A Meditation with Gifts from the Earth

Shari Czar

Saturday, January 30, following the Tu BiShvat Seder at Temple Beth-El, Hillsborough

Have you ever taken the time to really notice details of the wonderful gifts from the earth: the design in the center of a flower, the pattern on a rock, or the feeling of dirt between your fingers? Come discover what we may not previously have noticed as we celebrate the New Year for Trees.



Make the Connection

Are you interested in sharing an interest, hobby or passion with other like-minded congregants?

Are you looking for a way to become more deeply engaged in our temple community?

Do you just want to meet other temple members?

If you answered "yes" to any of these questions, we hope that you will sign up for a new pilot program rolling out later this year at Temple Beth-El. The program, called TBE Connects, seeks to increase our congregants' engagement with one another here at Temple Beth-El and to expand and strengthen friendships in our community.

Therefore, later this fall, we will be forming a number of small affinity groups at the temple. Groups will be formed around a common theme or interest. For the first year of the program, these groups will explore a wide range of interests and themes, from gourmet foodies to cyclists, congregants living near each other, those at various stages of life, and other shared topics or interests. Groups will gather for an enjoyable, engaging group activity or social event every three or four months. Each group will also gather for Temple Beth-El based events of their choosing at least twice in the coming year.

A trained congregant will facilitate each group. If you are interested in serving as a small-group guide, please contact one of us, and we would be glad to share more details. Stay tuned for more information about TBE Connects in the weekly E-bulletins and in upcoming issues of the *Shofar*.

Jeff Resnick and Debbie Herman

Discussion of URJ Biennial Resolutions

At each Biennial, several resolutions are proposed for delegates to discuss and vote on; these resolutions reflect current issues that our movement wishes to speak to and act on, usually proposed by the Commission on Social Action or other URJ constituencies.

This year the following three resolutions will be discussed:

- [Resolution in Support of Paid Family Leave](#)
- [Resolution on Mandatory Immunization Laws](#)
- [Resolution on the Rights of Transgender and Gender Non-Conforming People](#)

You can read these resolutions by clicking on the links above. Or you can visit the URJ Biennial Resolutions page at www.urj.org/about/union/governance/reso/2015biennial/

On Thursday, October 8, at 7:30 p.m. at the temple, our Social Action Committee invites all interested congregants to learn about and discuss these resolutions. We especially encourage Biennial delegates to join us. For more information, contact Social Action chairs Dave Cohen or Jodi Siegal at ChairSocialAction@TempleBethElNJ.org.



World Union for Progressive Judaism

in cooperation with

the **Union for Reform Judaism** and the **Religious Action Center of Reform Judaism**

is proud to offer a special mission:

Southern Jewish Civil Rights Experience

Sunday, November 8 through **Thursday, November 12, 2015**

(following the URJ/WRJ Biennial) **REGISTER ONLINE:** <https://urjyouth.wufoo.com/forms/mu32d9h0tjt1t/>

- > Journey from Atlanta, GA to Birmingham, Montgomery and Selma, AL and back to Atlanta.
- > Visit historical Civil Rights sites.
- > Meet inspirational leaders involved in the Civil Rights Movement.
- > Learn about the participation of the Reform Movement in Civil Rights activities.
- > Hear about the uniqueness of the Southern Jewish experience.
- > Celebrate 50 years since the march on Selma.
- > Travel with Reform/Progressive Jews from around the world.



Registration Fee*

\$1375 per person for double occupancy; \$1675 for single occupancy. Registration includes 4 nights in hotels, all meals, transportation, speakers and tours. Participants will need to book flights to and from Atlanta in time to meet the buses.

Reserve a place on this historic trip. Call WUPJ at 212-452-6534, visit www.wupj.org.

Brotherhood

by Harold Levin and Brian Wood, Co-Presidents

Support the Beth-El Youth Scholarship Fund

The Brotherhood Youth Scholarship Fund was established to provide Beth-El member families' children with the opportunity to attend meaningful educational, cultural and social programs that deepen the connection to their Jewish heritage. The fund accomplishes this goal by providing financial grants to eligible applicants every spring and is a vital part of our temple community's legacy.

We encourage all congregants to contribute to the fund either by participating in Brotherhood-sponsored

events that benefit the fund, or by providing a direct tax-deductible contribution in recognition of a special event close to your heart. In this manner, we can all make an impact in promoting our youth's Jewish identity.

Contributions are graciously accepted at all times. Checks should be made out to the TBE Brotherhood Youth Scholarship Fund and mailed to the temple office.

College Connection

by Cindy Scott, Chairperson

The College Connection program recently sent over 60 Rosh Hashanah packages to our college students. The package contained an apple, a honey jar and spoon, a granola bar, a pen, twizzlers, honey candy and a personal card. We know the students really appreciate the "care packages" and feeling like they are still connected to our community.

Here is some feedback from two students: "My daughter Cayla received her package the other day. She happened to be on the phone with me when she opened it and expressed her delight. She really thought it was nice, adorable and sweet and wanted folks to know!" Sam Lerner wrote, "I just received a care package from the temple and it was the sweetest thing ever! It made my entire day and I was so happy to receive it. Thank you all and the Temple Beth-El family so much!"

Sarah Gluck also sent a High Holy Day e-message to the community's college students, complete with links to study materials and a holiday story.

The next mailing will be for Chanukah. If you would like your student added or if your student has a new address for this year, please contact Cindy Scott at c.scott93@yahoo.com.



Cultural Arts

by Simona Rivkin, Chairperson

Cultural Arts Happenings for October

Back by popular demand, on November 14, at 7:00 p.m., is our third biennial cabaret with open mic. This lively, engaging evening features a selection of wines, elegant desserts, jazz by Flagtown (led by David Sandler) and Girl Jam (led by Beth Borrus), special guest appearances, stand-up comedians and open mic. We hope once again to create a relaxed, European-style cabaret in the temple social hall, which will be specially decorated for the occasion, where you can come for serenity, entertainment, and some intellectual stimulation.

Jazz lovers — it's for you!

Wine and sweets lovers — it's for you!

Comedy lovers — it's for you!

Open mic participants — it's for you!

So come, relax, laugh and be amazed, yet again, at the hidden talents within our own congregation! And above all: it's free to the public. Bring your friends and share the evening.

A response to Simona at bakerec@comcast.net is greatly appreciated.

Israeli Folk Dancing with Ruach started on September 10 and continues every Thursday evening from 7:30 p.m. til 9:00 p.m. in the multi-purpose room in the school wing, except holidays (check weekly e-letter or TBE's calendar). It's good for your heart, it's the best way to work mind, body and soul, and you'll meet some nice people, too. You will lose yourself in the rhythms of the dance, the tuneful music and the spirituality of dancing with good companions. Come see why we get addicted to dancing...

Cost: \$10 at the door.

First dancing session free for newcomers.

Finally, the CA Committee hopes that all of you have a good start at the new year, and with the fresh prospect of a new year ahead, that you might consider getting involved in the work of our committee.

Help us to continue the innovative programs exploring Jewish diversity that we bring to our congregation, which include entertainment, education and cultural learning. Interested? Email Simona at bakerec@comcast.net

Shalom,

Simona Rivkin

Café Temple Beth-El

Fresh bagels, Coffee, Snacks,
and Chillin' Together

Open 8:45 to 11:15 a.m. on
Religious School Sundays



Want to help schmeer
bagels or make
coffee? We can
always use a hand.

Contact Jay Taylor
908-507-7849 or
J.Taylor@Huber.com



The Movie
Deliman
A freshly made documentary by Eric Greenberg Anjou

**December 12,
Saturday, 7:00 p.m.**

**Cultural Arts Committee and
Renaissance present**
*A freshly made documentary by Eric
Greenberg Anjou*

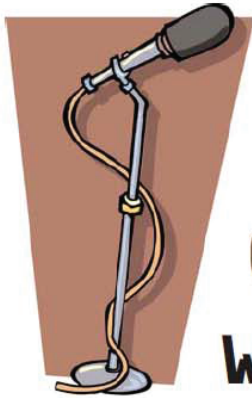
**This is the third film in
Anjou's trilogy on Jewish
culture.**

**Director Eric Greenberg
Anjou will join us for the
discussion of the film.**

Temple Beth-El Cultural Arts Committee
PRESENTS

CABARET STYLE ENTERTAINMENT With OPEN MIC

November 14 • 7:00 PM
Temple Beth-El, Hillsborough, NJ



Live Music
STand Up Comedy
Open Mic (sign up required)
Wine and Sweets

EVERYone's Invited!

Free to the Public

RSVP STRONGLY SUGGESTED, in respect for the artists
and workers who make it possible.

RSVP to bakerec@comcast.net by November 10



Renaissance Happenings

by Diane Morrison, Renaissance Group

The Renaissance Group is a 50+ social group that welcomes temple members/non-members, singles/couples. We get together for informational and fun activities. Should you wish additional information about the group, please call Harriet Thaler at 908-788-0269 or thaler@embargmail.

Our Fall Event Schedule

Please respond directly to the host of the event when you RSVP.

Duke Farms Tram Tour Ride (RESCHEDULED)

Duke Farms, Hillsborough
Enjoy popular sites and lunch
Thursday, October 8 at 10:00 a.m.
Cost: \$15 per person
Contact: Carol Ahlert at 908-359-9357 or via email at carolahlert@yahoo.com

Wine Tasting and Lunch

Old York Wine Cellars, Ringoes
Wednesday, October 14 at 11:00 a.m.
Cost: \$35 per person
Contact: Zina Wolin at 732-412-7755

Lunch Out

Carpaccio's, Middlesex
Sunday, November 8 at 1:00 p.m.
Contact: Gail Meyers at 732-868-0748

Film Screening of *Deli Man*

Renaissance joins the Cultural Arts Committee in presenting Erik Greenberg Anjou's movie, *Deli Man* with deli-icious appetizers
At the temple
Saturday, December 12, 7:00 p.m.
Contact: Simona Rivkin at bakerec@comcast.net

Chanukah Pot-luck Lunch

Off-site
Sunday, December 13, 1:00 p.m.
More information to follow.



Paul Arnold Associates, Inc.

"For Every Insurance Problem,
There Is A Solution"

**Ready to handle all your Business
and Personal Insurance needs:**

- Business Insurance • Umbrella
- Workers Compensation • EPLI
- Directors & Officers • Health Insurance
- Homeowners / Umbrella

Michael F. Braunstein, CPIA, Partner

Phone (973) 927-0084 x 3073

Fax (973) 927-0155

Michael@paularnoldassoc.com

www.paularnoldassoc.com



Sisterhood Women's Torah Study Group:

(one of those perks of Sisterhood membership)

Next session:

Wednesday, October 28 at 7:30 p.m.

Hosted by: Fern Schiffman
35 Newell Street, Hillsborough

Discussion Leader: Irene Lieberman

A Torah Portion Rich in Discussion Topics

(Genesis 18:1-22:24)

- God promises Abraham and Sarah a son...
- Judgment and destruction of Sodom and Gomorrah
- Abraham passes Sarah off as his sister (no kidding)
 - The birth of Isaac (after all hope is lost)
 - Hagar and Ishmael are sent away
- Abraham is commanded to Sacrifice Isaac (high drama)
 - And more.....

R.S.V.P. to Gayle Skolky (gskolky@gmail.com or 908-575-0444)

October is Sisterhood Membership Month!

3 Great Reasons to Join Sisterhood:

- **Friendship**
- **Spirituality**
- **Support:**
 - ✓ *Of Each Other*
 - ✓ *Of Temple Beth-El*
 - ✓ *Of the Local Community*
 - ✓ *Of the Worldwide Community through Women of Reform Judaism*
- **Earn a chance to win a special gift basket like last year's (pictured above)**



NOTE: Pay your dues by October 31 to be eligible to win this year's prize gift basket! Membership forms are available in the temple lobby, or ask in the gift shop.

Sisterhood

by Marcy Rosenfeld and Cindy Scott, Co-Presidents

Welcome to the Sisterhood! (Sisterhood 102)

For those of you who read last month's *Shofar* article "Sisterhood 101," you may recall that we promised more answers. We wrote about what Sisterhood is as an organization, who belongs to Sisterhood, and what it does for the Temple Beth-El community. Below are some more answers — including about what Sisterhood does for the local community, the worldwide community, and the Sisterhood members themselves.

What does the Sisterhood do?

For our local community: We support the Interfaith Hospitality Network (IHN), the Giving Network, Big Brothers/Big Sisters and the Resource Center of Somerset County, which helps victims of domestic abuse.

For the worldwide community: Sisterhood supports Jewish and humanitarian causes throughout the world through our dues to the WRJ and its programs. We make special donations to the Women of the Wall and the Atlantic District of the WRJ in support of their special programs. Our group provided financial support to rabbinic/cantorial students at Hebrew Union College and through designated donations to the WRJ YES Fund.

For ourselves: We hold women's Torah study sessions (formerly Rosh Chodesh Torah Study) and the annual Woman of Valor Dinner. Sisterhood subsidizes the cost of its Sisterhood Day of Rest and Renewal for members, and offers a member discount at the temple Judaica Gift Shop. One of Sisterhood's goals this year is to reach out to more women at the temple and to do more for Sisterhood members. In the coming year, we will also partner with the Cultural Arts Committee to offer an Israeli film evening, including refreshments, and Sisterhood members will be offered free admission. We feel there is more we can do, and we need your help to do that! Please send Co-Presidents Marcy and Cindy, or any one of our dedicated board members, any feedback about how we can make Sisterhood better, and give back to you!

Why should I be interested?

Membership in Sisterhood offers a special opportunity for women to share time together with other women, to form friendships and to explore our commitments from a woman's perspective. We have been and remain critical to the temple's many successes, and we help our congregants add Jewish depth to their lives.

How much does it cost to join?

Sisterhood membership is a bargain at just \$40 annually. Add \$18 more for mitzvah membership. As discussed above, a portion of the dues is forwarded to the WRJ to support their various projects. (No one is ever denied membership due to financial constraints. Just contact

Marcy or Cindy to discuss.) October is membership month for Sisterhood. Every paid Sisterhood member will be eligible for the drawing at the end of the month for the beautiful gift basket on display in the gift shop window.

What do you do with the money?

If you have read everything up to this point, you know that your dues and other funds that are raised go to support programs and projects benefiting the temple community, the local community and the worldwide community. Yes, we also feel that Sisterhood members should feel personally rewarded for their support — so we provide discounts for gift shop purchases and subsidized costs for participation in certain Sisterhood events. On the whole, we believe that the money is put to great use, and we are proud of the support we are able to offer to the many worthwhile programs.

Any questions? Come check us out on October 4 at our meet and greet breakfast. We are all ears and hope to meet and hear from you soon!

Jewelry/Accessories Swap!!!!!!

Sunday, October 4 - 9:30 a.m. until 11:00 a.m.

In the Kitchen Social Hall

***Come check out Sisterhood:
Join us for complimentary breakfast,***

Meet a bunch of friendly ladies,

Share some stories,

Spend some quality time

AND



Bring your jewelry and accessories that you've grown tired of to swap for other ladies' former treasures.

Come check us out!!!!

Questions:

Call Cindy (908) 963-4219 or

Marcy (908) 407-5816

Social Action

Together we can change the world!

by David Cohen and Jodi Siegal, Co-Chairs

Shalom Chaverim,

At the risk of seeming repetitive, for this month's *Shofar*, we are going to beat the drum again for our new and improved Mitzvah Day, coming soon to a temple near you! This year, Mitzvah Day will occur on Sunday, November 1. In addition to old favorites mentioned in last month's article, such as the blood drive, working in the garden, Nothing But Nets, a choir performance at a local nursing home, and volunteering at the local food bank, we are bringing back some other past favorites, and introducing some significant new offerings this year.

We have confirmed our Build Day with Habitat for Humanity on Mitzvah Day. We are looking for 10 to 14 hardy volunteers who want to contribute to the construction of an affordable housing unit for someone in need. The work session will last from 8:00 a.m. to 1:00 p.m., and adults are welcome. Teenagers from 16–18 years old are also welcome if accompanied by an adult, but the use of power tools is a treat reserved for adults. Sorry, but we can't accommodate child labor for this particular mitzvah opportunity. Please contact David Cohen (david@decarchitect.com) ASAP if you are interested, to reserve your place on the crew. We hope to have overwhelming interest in this new opportunity, so best to get your name on the list sooner rather than later.

On a related note, our long-standing successful participation in the Interfaith Hospitality Network, through which we host homeless families for a week at a time periodically throughout the year, is sorely in need of new congregant hosts willing to take a shift either over the dinner hour, in the evening, or even overnight at the temple on an occasional basis. We know this can feel intimidating if you have never done it before. That is why, this Mitzvah Day, we will be offering an orientation/training program for all interested members who would like to learn just how easy and rewarding serving as a host can be. Training will include guidance on how best to support and interact with guests to truly make a difference in their lives, as well as the nuts and bolts of how we make hosting work in our building to keep our congregational home secure, avoid stepping on the toes of other temple users, and minimize the burden on our already hard-working custodial staff.

We are also looking to reinvigorate the Green Team by kicking off participation in Terracycle's Brigades program, which allows organizations to collect and repurpose formerly difficult-to-recycle items, while raising funds for the congregation at the same time. We know everyone was sad to see our soft plastics recycling program end – here is an opportunity to release your pent-up recycling urges and help Temple Beth-El all at the same time!

Finally, Sisterhood will be running a one-day rummage collection to benefit the Big Brothers/Big Sisters organization, and also a household items collection to

benefit the Giving Network. Keep checking the temple e-letter for a list of desired items. Brotherhood will be repeating their bicycle collection drive to benefit Pedals for Progress. This group refurbishes donated bicycles and passes them on to needy overseas recipients. Both the Brotherhood and Sisterhood initiatives benefit the environment by diverting waste from landfills. They also benefit the recipients, who give new life to and gratefully benefit from the continuing usefulness of the donated items.

*Ani v'atah n'shaneh et ha olam –
together we can change the world!*



BIENNIAL 2015

NOVEMBER 4-8 • ORLANDO, FL

**Join our Congregation
at the largest Jewish
gathering in
North America!**

**urj.org/biennial
#URJBiennial**

Interfaith Hospitality Network

Leigh Freeman, Coordinator — IHN / Temple Beth-El

Our next hosting date is
November 15-21

Upcoming hosting dates
December 20-26

January 17-23

Please call the appropriate coordinator listed below to schedule a volunteer shift. Always check the IHN Coordinators Contact List in each issue of the *Shofar*, as it's possible that there have been changes. **Each volunteer is expected to honor their commitment to the IHN hosting week. If a volunteer is unable to fulfill their commitment, they should contact another volunteer and swap dates.**

IHN Coordinators Contact List

Function	Name	Main Phone	Other Phone	Email Address
Coordinator	Leigh Freeman	908-359-2724	908-391-1397 (c)	dancer.leighfreeman@att.net
Dinner Shift Volunteers	Pam Cohen		732-629-1798 (c)	pammcohen@yahoo.com
Evening Shift Volunteers	Julie Hirsch	732-580-8246		jbgirsch@gmail.com
Overnight Shift Volunteers	Sharon Sietz	908-231-0979		sharon.sietz@gmail.com
Meals	Nicole Goldstein	908-874-0899		npgoldstein@comcast.net
Food/Supplies	Mara White	908-231-1518	301-704-6066 (c)	mara@alumni.brown.edu
Linen Pick-Up	Cindy Andrews			cjrandrews@gmail.com
Set-Up/Breakdown	Dave Cohen	609-683-5766		david@decarchitect.com
IHN/SC/Day Center	Karen Donohue	908-704-1920	908-217-0217 (c)	karen@ihnsc.org



TBE Fall Blood Drive

Sunday, November 1
7:30 a.m. to 12:30 p.m.

Three ways to sign up:

1. Make your appointment at: www.redcrossblood.org
Enter sponsor code: Temple Beth-El – Hillsborough;
2. Sign up using the American Red Cross App (available in the App store); OR
3. Contact Jodi Siegal jsdegonzalez@gmail.com (908) 541-1170

Visit www.redcrossblood.org or call **1 800 RED CROSS** for tips and eligibility guidelines.

Other Resources: www.cdc.gov/malaria/map and www.sicklecell.org

Please bring picture identification. Remember, eat a healthy meal and drink plenty of fluids before donating!

Lifecycle

Temple Beth-El Family News

October B'nei Mitzvah

Isabella (Bella) Almeida
Jonathan Funaro
Amanda Cohen
Jack Haftel
Justine Smith

Our Condolences to...

Sharon Hambro, on the passing of her mother, Lillian Roberts
Laura Miller, on the passing of her husband, Sig Miller
Ted Baker, on the passing of his sister, Anne Siegel
Debbie Levenberg, on the passing of her father, Lawrence Siegel
Craig Cartmell on the passing of his mother

Our Caring Community

Kesher Network: For those who are unable to attend our worship and simcha events and some adult education classes, our video streaming service is the next best thing to being there. Navigate to new.livestream.com/OurBethEl from a personal computer or mobile device (apps are available for [apple](#), [android](#) and [roku](#) devices) for a list of upcoming and recent livestream events from Temple Beth-El.

Shiva Minyans: For a leader or participants, call Amy Rubin or Cantor Pincus.

Mitzvah Committee: To offer or request help, please contact Carol Ahlert, carolahlert@yahoo.com, or 908-359-9357.

In the event of a loss during the evening or on the weekend, call Rabbi Gluck at 908-722-0674, ext. 111, or 908-229-1618.

To share your family's news in the *Shofar*, call Susan Walters in the temple office. Please contact Susan with information about significant occasions, hospitalizations, or the loss of a loved one.

Prayer for Healing Cards: Cards are available in the temple lobby to let those in need of healing know that their names were included in our Mishebeirach prayer. The cards can be mailed as postcards by writing the address over the Temple Beth-El watermark or directly inserted into get well cards.

NJ's LARGEST SELECTION OF FITNESS EQUIPMENT
COMPARE MOST MAJOR BRANDS INCLUDING CONSUMERS REPORTS BEST BUYS

REPS
FITNESS SUPPLY .COM
5,000 SQ FOOT SHOWROOM
RESIDENTIAL • CORPORATE • INSTITUTIONAL
SALES • ON SITE SERVICE • DELIVERY • INSTALLATION
GUARANTEED LOWEST PRICES...EVERYDAY!

★ **TREADMILLS** ★ **HOME GYMS**
★ **ELLIPTICALS** ★ **FREE WEIGHTS**
★ **BIKES** ★ **SUPPLEMENTS**

★ **ACCESSORIES**
★ **MARTIAL ARTS**
★ **CLOTHING**

Special Discounts For Temple Members!

NO PRESSURE...NON-COMMISSIONED SALES PROFESSIONALS

6 MONTH INTEREST FREE FINANCING ★ **908-526-7377** ★ **OPEN DAYS 7 A WEEK**
886 RT. 22 EAST • SOMERVILLE NJ

The Invitation Lady

Invitations and Personalized Stationery for all life's special occasions

Susan Brenner
908-601-1297
susan@theinvitationladynj.com
www.theinvitationladynj.com

- Shop on-line or in-person
- Invitations for all occasions
- Great teacher gifts, note cards, camp notes & more
- Same prices but better service than other on-line shopping

Mention this ad to receive 20% off

Yahrzeits October

[Click here to return to Page 1](#)

We extend our deepest sympathy to those of you who will be marking a loved one's Yahrzeit in the coming month. Below are the dates for the Yahrzeits we will be reciting during Shabbat services.

To be read October 2

Ira Zelnick, Brother of Zizi Reinhart
Frederick Klein, Father of David Klein
Jeff Mitchell, Brother of Donna Tischfield
David Ellenberg, Father of Naomi McGlashan
Mary Wisniewski, Mother of Carol Nerenberg
Perry Bucholtz, Father of Ronnie Weyl
Carl Smith, Father of Joseph Smith
Carl Edward Feusse, Father of Andy Feusse
Sidney Grossman, Father of Linda Strand
Russel Johnston, Sr., Father of Russ Johnston
Joseph Marciniak, Father of Judi DiMaio
Judith Millstein, Mother of Randi Millstein
Mathew Morelli, Son of Ralph Morelli and Marci Becker-Morelli
Judith Moroz, Mother of Tracy Wasserman
Leon S. Rosenblum, Brother of Fern Kamine
Charles Howard, Brother of Sidney Horowitz
Gerald Moshinsky, Brother of Leonard Moshinsky

To be read October 9

Lynette Byers, Sister of Jonathon Andell
Berdie Drazin, Mother of Jackie Spinner
Dora Friedman, Mother of Helene Fine
David Golub, Father of Jill Geller
Malcolm F. Becker, Father of Marci Becker-Morelli
Daniel Franzblau, Father-in-Law of Barbara Franzblau
Irwin Fidelman, Father of Wayne Fidelman
Alice Greenhut, Grandmother of Robert Adler
Betty Plan, Mother of Michael Plan
Anne Rubin, Mother-in-law of Sylvia Rubin
Ralph Saperstein, Father of Carolyn Wald and Steven Saperstein
Saundra Schiff, Aunt of Rick Miller
Alvin Silverstein, Father of Fern Smith
Dr. Howard Vogel, Brother of Irwin Vogel
Frances Fishman, Mother of Andrew Fishman
Mildred Schrier, Mother of Sheryl Miller
Rachel Lorraine Andell, Daughter of Jonathon and Karen Andell
Morris Kaminetsky, Father-in-law of Fern Kamine
Irv Steinberg, Grandfather of Wendy Horowitz

To be read October 16

Judith Cohen, Sister of Jeanette Tuckman
Rubin Cohen, Father of Gary Cohen
Donald Meyers, Step-father of Stacy Rankin
Harry Silver, Father of Ed Silver
Abraham Etkins, Father of Donna Etkins
Seymour Roth, Father of Lori Roth
Joseph Halpern, Father of Morris Halpern
Wendy DeLapi, Sister of Evette Adler
Abe Raynes, Father of Harriet Thaler
Marty Wallerstein, Father of Jolie Doyle
Claire Skowronek, Daughter of Brian and Lynnette Skowronek
David Small, Uncle of Brian Small
Jacob Kaplan, Grandfather of Gail Wohl

To be read October 23

Bertram Edelman, Father of Marsha Malberg
Mollie Friedman, Mother of Marc Friedman
Marion Kaplan, Mother of Mitchell Kaplan
Mary Klimczak, Mother of Joan Weiss
Ruth Levenberg, Mother of Richard Levenberg
Aaron Plan, Father of Michael Plan
Ruth B. Rosenblum, Mother of Fern Kamine
Benjamin Shapiro, Father of Irene Lieberman
Hilda Blaustein, Mother of Betty Roswell
Evelyn Spinrad, Mother of Marcy Rosenfeld
Mona Feirson, Cousin of Marilyn Muzikar
Stephen Holler, Father of Keith Holler
Martine Kamenetzky, Sister-in-law of Simona Rivkin
Joseph Lieberman, Father of Madelyn Okun
Daniel Eisenberg, Father of Dorothy Vogel
Esther Skowronek, Mother of Joshua Skowronek
Paul Young, Father of Anita Tolman
Morton Hersh, Father of David Hersh
Lois Naroden, Mother of Alan Naroden

To be read October 30

Louise Fidelman, Mother of Wayne Fidelman
Albert Katzenstein, Grandfather of Howard Mangel
Mildred Ellenberg, Mother of Naomi McGlashan
Myer Kaplan, Father of Ellen Davidson
Anna Novak, Mother of Dr. Gerald Novak
Joseph Miller, Father of Lorin Miller
Moe Gilbert, Father of Marlane Wolf
Sondra Silverstein, Mother of Fern Smith
Ben Altschule, Father of Sara Friedman
Al Kamine, Husband of Fern Kamine and Father of Hal Kamine
Martin Rosenel, Father of Richard Rosenel
Warren Thaler, Husband of Harriet Thaler

To be read November 6

Max Miller, Grandfather of Brett Miller
Stanley Gluck, Father of Rabbi Arnold Gluck
Erwin Naroden, Father of Alan Naroden
Joseph Skolky, Father of Barry Skolky
Rachelle Friedberg, Wife of Morton Friedberg
Fanny Horowitz, Mother of Sidney Horowitz
Marilyn Kohn, Mother of Hal Kohn
Julius Greenhut, Grandfather of Robert Adler
Tseelah Grinberg, Mother of Michelle Gerner
Benjamin Schlosser, Father of Lynn Levine
Susan Small, Mother of Brian Small
Morris Simon, Father of Janet Halpern
Meghan Bradley, Daughter of Ilene and Robert Bradley
Annette Rothman, Mother of Shelley Gomolka
Hilda Slackman, Mother of Rhonda Brown
Shirley Steinman, Mother of Judi Steinman

Contributions to Temple Funds

RABBI'S DISCRETIONARY FUND

In memory of Terri Davidson
Alan and Gail Wohl
 In honor of the wedding of their daughter Tess to
 Jake Hanson
Janet and Rande Aaronson
 In appreciation of High Holy Day services
Sandie Rabinowitz
Estelle Julian
 In appreciation of Rabbi Gluck
Wendy and Stephen Offen

CANTOR'S DISCRETIONARY FUND

In appreciation of High Holy Day services
Rena Fruchter and Brian Dallow
 In memory of Murray Hysen
Arlene Hysen

MEMORIAL FUND

In memory of Carl Feusse
Andy and Nancy Feusse
 In memory of Thomas Angeline
Hillary Angeline
 In memory of Harold Sage
Eileen Ruderman
 In memory of Sophie Levine
Rita Fink
 In memory of Sadie Baker
Pam and Gregg Sharenow
 In memory of Ida Cudzynowski
 In memory of Alter Cudzynowski
Joseph and Barbara Cudzynowski
 In memory of Daniel Tucker
 In memory of Harry Tucker
 In memory of Rose Brooks Cohen
Barbara Cohen

KESHER NETWORK

In appreciation of Jim Lavranchuk
Barbara and Russell Johnston

GENERAL FUND

In memory of Max Schaefer
 In memory of Pearl Schaefer Dafrowitz
 In memory of Henry Bensoul
 In memory of Rachel Bensoul
Rich and Zahava Schaefer

GARDEN FUND

Cindy Scott and David Goldberg

RITUAL

In appreciation of her recovery and path to good health
Edith Hurwitz

Temple Beth-El has many funds available to which members can contribute. Donations to these committed funds help support Temple programs and enable us to continue to maintain a high level of programming for our community.

- Adult Education
- Beautification
- B'nei Mitzvah Fund
- Brotherhood Youth Scholarship
- Cantor Pincus' Discretionary Fund
- Cemetery
- Cultural Arts
- Endowment Fund
- Garden
- General Fund
- Holocaust Education
- Israel Matters
- Jules Swickle Chesed Fund
- Keshet Network
- Library
- Mazon Hunger Fund
- Memorial
- Prayer Book
- Rabbi Gluck's Discretionary Fund
- Religious School Enrichment
- Religious School Scholarship Fund
- Social Action (including IHN)
- Special Needs
- Yad Chazakah Fund
- Youth Activities

Please send donations to committed funds to Susan Walters in the temple office.

Caren Bateman

SHOEBOX
 COMPUTER SERVICES, INC.



117 West End Avenue, Suite 201
 Somerville, NJ 08876
 (908) 722-9379 • Cell (908) 507-9024

Jewish Hospice Care



- Excellent Nurse to Patient Ratio
- Home Health Aide Support for Family
- Bereavement Support Monthly Meeting
- Complementary Chicken Soup plus Harp and Massage therapies



STEIN HOSPICE
 at The Oscar and Ella Wilf Campus for Senior Living

49 Veronica Ave., Suite 206
 Somerset, NJ 08873
 (732) 227-1212
www.SteinHospiceNJ.org

Serving Union, Middlesex,
 Somerset and Monmouth Counties

Accredited by the National Institute
 for Jewish Hospice

Thursday, October 1

Chol HaMoed Sukkot

- 6:00 p.m. Jewish LIFE: Gentle Yoga Flow
- 7:00 p.m. Jewish LIFE: Israeli Folk Dancing

Friday, October 2

Chol HaMoed Sukkot

- 6:00 p.m. Shabbat for Tots
- 6:00 p.m. Pizza in the Hut
- 8:00 p.m. Shabbat Evening Service

Saturday, October 3

Shabbat Sukkot

- 10:00 a.m. Shabbat Morning Service and Torah Study with B'nei Mitzvah of Isabella Almeida and Jonathan Funaro

Sunday, October 4

Chol HaMoed Sukkot

Erev Simchat Torah/Shemini Atzeret

- 9:00 a.m. Sunday School — Opening Session
- 9:30 a.m. Sisterhood Fall Meet and Greet
- 11:00 a.m. Grade 7 Spring 2016 B'nei Mitzvah Family Meeting
- 7:00 p.m. Simchat Torah Service and Torah Parades

Monday, October 5

Shemini Atzeret

- Temple Office is Closed
- 9:00 a.m. Shemini Atzeret and Yizkor Service
- 4:00 p.m. Hebrew School

Tuesday, October 6

- 6:00 p.m. Youth Leadership Training Seminar

Wednesday, October 7

- 4:00 p.m. Hebrew School
- 6:00 p.m. Confirmation Academy
- 7:00 p.m. Outreach Committee Meeting

Thursday, October 8

- 10:00 a.m. Renaissance Duke Farm Tours
- 6:00 p.m. Jewish LIFE: Gentle Yoga Flow
- 7:00 p.m. Jewish LIFE: Israeli Folk Dancing
- 7:00 p.m. Presentation of URJ Biennial Resolutions followed by Social Action Committee Meeting

Friday, October 9

- 7:00 p.m. Family Shabbat Service with Grade 6 Kabbalat Torah

Saturday, October 10

- 10:00 a.m. Shabbat Morning Service and Torah Study with B'nei Mitzvah of Amanda Cohen and Jack Haftel

Sunday, October 11

- 9:00 a.m. Jewish LIFE: Rabbi's Breakfast
- 9:00 a.m. Sunday School
- 11:00 a.m. Sukkah Take Down
- 11:00 a.m. Jewish LIFE: Intermediate Biblical Hebrew

Monday, October 12

- 4:00 p.m. Hebrew School
- 6:00 p.m. Post-Confirmation
- 7:00 p.m. Board of Trustees Meeting

Wednesday, October 14

- 11:00 a.m. Renaissance Wine Tasting
- 4:00 p.m. Hebrew School
- 6:00 p.m. Sisterhood Board Meeting
- 6:00 p.m. Confirmation Academy
- 7:00 p.m. Confirmation Academy Orientation for 8th Grade Parents

Thursday, October 15

- 6:00 p.m. Jewish LIFE: Gentle Yoga Flow
- 7:00 p.m. Jewish LIFE: Israeli Folk Dancing
- 7:00 p.m. Jewish LIFE: Yoga Nidra

Friday, October 16

- NFTY GER Fall Kallah
- 8:00 p.m. Shabbat Evening Service with Choir

Saturday, October 17

- NFTY GER Fall Kallah
- 10:00 a.m. Shabbat Morning Service and Torah Study with Bat Mitzvah of Justine Smith

Sunday, October 18

- NFTY GER Fall Kallah
- 9:00 a.m. Sunday School
- 4:00 p.m. Connection Training

Monday, October 19

- 4:00 p.m. Hebrew School
- 6:00 p.m. Youth Culture Committee
- 7:00 p.m. Brotherhood Kickoff Get-together
- 7:00 p.m. Religious School Committee Meeting

Tuesday, October 20

- 7:00 p.m. Federation Event: Women's Division
- 7:00 p.m. Membership Committee Meeting
- 7:00 p.m. Jewish LIFE: Jewish Renewal in Israeli Pop Music

Wednesday, October 21

- 4:00 p.m. Hebrew School
- 6:00 p.m. Confirmation Academy
- 7:00 p.m. Confirmation Class Parent Meeting

Thursday, October 22

- 7:00 p.m. Jewish LIFE: Israeli Folk Dancing

Friday, October 23

- 8:00 p.m. Shabbat Evening Service — Shabbat B'Shir

Saturday, October 24

- 10:00 a.m. Shabbat Minyan Service and Torah Study
- 7:00 p.m. Youth: LTS Shul-in
- 7:00 p.m. Adult Game Night

Sunday, October 25

- 8:00 a.m. Grade 6 Trip to Museum of Jewish Heritage
- 9:00 a.m. Sunday School with Gr. PK/K Family Ed
- 9:00 a.m. Jewish LIFE: Beginning Hebrew Reading
- 9:00 a.m. Brotherhood Breakfast
- 10:00 a.m. Jewish LIFE: Aleph Isn't Enough
- 11:00 a.m. Jewish LIFE: Intermediate Biblical Hebrew

Monday, October 26

- 4:00 p.m. Hebrew School
- 6:00 p.m. Post-Confirmation
- 7:00 p.m. Executive Committee Meeting

Tuesday, October 27

- 9:00 a.m. Federation Women's Philanthropy Division Imagine Brunch
- 7:00 p.m. Jewish LIFE: Jewish Renewal in Israeli Pop Music

Wednesday, October 28

- 4:00 p.m. Hebrew School
- 6:00 p.m. Confirmation Academy
- 7:00 p.m. Women's Torah Study

Thursday, October 29

- 6:00 p.m. Jewish LIFE: Gentle Yoga Flow
- 7:00 p.m. Jewish LIFE: Israeli Folk Dancing

Friday, October 30

- 6:00 p.m. Shabbat Seder

Saturday, October 31

- 10:00 a.m. Shabbat Minyan Service and Torah Study

Contacting Temple Beth-El

Temple Office:.....908-722-0674
 Religious School Office:908-704-1212

To Contact the Temple Beth-El Staff by email:

Rabbi Arnold S. Gluck	RabbiGluck@TempleBethElNJ.org
Cantor Emily Wigod Pincus	CantorPincus@TempleBethElNJ.org
Amy Rubin, Director of Administration	AmyRubin@TempleBethElNJ.org
Sarah Gluck, Education Director	SarahGluck@TempleBethElNJ.org
Lisa Friedman, Education Director	LisaFriedman@TempleBethElNJ.org
Betty Parenti, Financial Manager	BettyParenti@TempleBethElNJ.org
Susan Walters, Executive Secretary	SusanWalters@TempleBethElNJ.org
Ivy Anglin, Religious School Secretary	IvyAnglin@TempleBethElNJ.org
Dan Merer, Director of Youth Engagement	DanMerer@TempleBethElNJ.org

Shofar Advertising

To place an ad in the Shofar or for more
 advertising information, please contact
ShofarAdvertising@TempleBethElNJ.org